



ADMIRALTY NOTICES TO MARINERS

Weekly Edition 19

11 May 2023

(Published on the ADMIRALTY website 28 April 2023)

CONTENTS

- I** Explanatory Notes. Publications List
 - II** ADMIRALTY Notices to Mariners. Updates to Standard Nautical Charts
 - III** Reprints of NAVAREA I Navigational Warnings
 - IV** Updates to ADMIRALTY Sailing Directions
 - V** Updates to ADMIRALTY List of Lights and Fog Signals
 - VI** Updates to ADMIRALTY List of Radio Signals
 - VII** Updates to Miscellaneous ADMIRALTY Nautical Publications
 - VIII** Updates to ADMIRALTY Digital Services
-

For information on how to update your ADMIRALTY products using ADMIRALTY Notices to Mariners, please refer to NP294 How to Keep Your ADMIRALTY Products Up-to-Date.

Mariners are requested to inform the UKHO immediately of the discovery of new or suspected dangers to navigation, observed changes to navigational aids and of shortcomings in both paper and digital ADMIRALTY Charts or Publications.

The H-Note App helps you to send H-Notes to the UKHO, using your device's camera, GPS and email. It is available for free download on Google Play and on the App Store.

The Hydrographic Note Form (H102) should be used to forward this information and to report any ENC display issues.

H102A should be used for reporting changes to Port Information.

H102B should be used for reporting GPS/Chart Datum observations.

Copies of these forms can be found at the back of this bulletin and on the UKHO website.

The following communication facilities are available:

NMs on ADMIRALTY website:	Web: admiralty.co.uk/msi
Searchable Notices to Mariners:	Web: www.ukho.gov.uk/nmwebsearch
Urgent navigational information:	e-mail: navwarnings@ukho.gov.uk Phone: +44(0)1823 353448 +44(0)7989 398345 Fax: +44(0)1823 322352
H102 forms (see back pages of this Weekly Edition)	e-mail: sdr@ukho.gov.uk Post: UKHO, Admiralty Way, Taunton, Somerset, TA1 2DN, UK
All other enquiries/information	e-mail: customerservices@ukho.gov.uk Phone: +44(0)1823 484444 (24/7)

I

GUIDANCE NOTES FOR THE USE OF ADMIRALTY NOTICES TO MARINERS ON THE UKHO WEBSITE

The Weekly Notices to Mariners (NM) updates for paper Charts and Publications can be accessed via admiralty.co.uk/msi or the searchable NM Website www.ukho.gov.uk/nmwebsearch. The latest digital NM Weekly update is available 10 days prior to the paper publication date; there are no subscription fees for access to the UKHO Notices to Mariners Website.

NB: The NM database includes historical NM data from 1 January 2000, for NMs prior to 2000 the Cumulative List of Notices to Mariners (NP234B-00) must be used.

Software required:

Adobe Acrobat Reader (Version 6.0 or later). Reader software can be obtained direct from the Adobe website (www.adobe.com).

SEARCHABLE NOTICES TO MARINERS

Enter the www.ukho.gov.uk/nmwebsearch website and select the search option that you require following the on screen instructions:

- Search NMs by - Chart Number only
- Search NMs by - Chart Number + Previous NM Number/Year
- Search NMs by - Chart Number + Between Previous and Present Dates
- Search for Single NM by NM Number/Year

To view the NM, NM Note or full-colour NM Blocks, click on the relevant link.

NOTICES TO MARINERS ON-LINE

Enter the admiralty.co.uk/msi website, and then select Notices to Mariners. This will give you access to the following range of Notice to Mariners services:

- *ADMIRALTY NM Web Search*
- *Weekly NMs*
- *NM Block, Notes and Diagrams*
- *Annual NMs*
- *Cumulative NM List*

FURTHER GUIDANCE NOTES

For further details of the online NM facilities please see the NM Guidance Notes on the website, additional detail includes:

- File content and description
- PC and printer specifications

CUSTOMER SERVICE

If you experience any difficulties, please contact the UKHO Customer Services Team in the UK on:

Tel: +44 (0) 1823 484444 (office hours Monday-Friday 6am-10pm GMT and an on call service for emergency permits operated 24/7)

Email: customerservices@ukho.gov.uk

Our Singapore team can also be contacted outside of UK hours on:

Tel: +65 6424 4200

ADMIRALTY NOTICES TO MARINERS

This ADMIRALTY Notices to Mariners Bulletin (ANMB) is published by the UK Hydrographic Office (UKHO). The UK Maritime and Coastguard Agency accepts that both the paper and digital forms of the ANMB comply with carriage requirement for Notices to Mariners within Regulation 19.2.1.4 of the revised Chapter V of the Safety of Life at Sea Convention, and the Merchant Shipping (Safety of Navigation) Regulations, both of which came into force 1 July 2002.

While every effort is made to ensure that the data provided through the Notices to Mariners service is accurate, the user needs to be aware of the risks of corruption to data. It is important that the user should only use the data on suitable equipment and that other applications should not be running on the user's machine at the same time. Users should exercise their professional judgement in the use of data and also consult the Mariners' Handbook (NP100) for further details.

The user needs to be aware that there is a possibility that data could be corrupted during transmission, or in the process of display or printing on the user's equipment, or if converted to other software formats, and is accordingly advised that the UKHO cannot accept responsibility for any such change, or any modifications or unauthorised changes, made by licensees, or other parties.

Planning for the future

Plan with ADMIRALTY Maritime Data Solutions, brought to you by the United Kingdom Hydrographic Office.



UK Hydrographic
Office

Admiralty Way, Taunton, Somerset
TA1 2DN, United Kingdom
Telephone +44 (0)1823 484444
customerservices@ukho.gov.uk
gov.uk/ukho

Find out more about our market-leading
ADMIRALTY Maritime Data Solutions:

admiralty.co.uk    

ADMIRALTY and  are trademarks of the Secretary of State for Defence

© Crown Copyright 2020. All rights reserved. Correct at the time of publishing.

I

EXPLANATORY NOTES

Dating

Weekly Notices are dated for the Thursday appropriate to the week that the printed version is despatched from the UKHO. They are available earlier from the UKHO website.

Section I - Publications List

At the beginning of the Publications List is an index of ADMIRALTY Charts affected by the Publications List. Thereafter there are a number of standard lists which contain details and announcements concerning charts and publications relevant for the particular Weekly Notice. Full details of how to use the various lists contained in Section I are available in **NP294**.

Special Announcements and Errata are occasionally included at the end of this Section.

Section IA - Temporary and Preliminary (T&P) Notices

A list of T&P Notices in force (along with a list of those cancelled during the previous month), is included in the Weekly NM each month (see below).

Section IB - Current Nautical Publications

Information about Publications including the current edition numbers is included in the Weekly NM at the end of March, June, September and December.

Section II - Updates to Standard Nautical Charts

The notices in Section II give instructions for the updating of standard nautical charts and selected thematic charts in the ADMIRALTY series. Geographical **positions** refer to the horizontal **datum** of the current edition of each affected chart which is stated in the notice alongside the appropriate chart number. Positions are normally given in degrees, minutes and decimals of a minute, but may occasionally quote seconds for convenience when plotting from the graduation of some older-style charts. Where **Leisure Products** are referred to different horizontal datums from the standard nautical charts for that geographical area, positions in the notices cannot be plotted directly on these products. Bearings are true reckoned clockwise from 000° to 359°; those relating to lights are from seaward. Symbols referred to are those shown in NP5011. Depths and heights are given in metres or fathoms and/or feet as appropriate for the chart being updated (abbreviated where necessary to m, fm and ft respectively). Blocks and notes accompanying notices in Section II are placed towards the end of the section.

T&P Notices. These are indicated by (T) or (P) after the notice number and are placed at the end of Section II. They are printed on one side of the paper in order that they may be cut up and filed. To assist in filing, the year is indicated after the notice number and an in-force list is published monthly. **Information from these notices is not included on charts before issue;** charts should be updated in pencil on receipt. Associated diagrams are reproduced with Blocks at the end of Section II.

Original Information. A star (*) adjacent to the number of a notice indicates that the notice is based on original information.

Section III - Navigational Warnings

NAVAREA I Navigational Warnings in force at the specified time quoted in the header are reprinted in Section III. It is recommended that this reprint should be kept in a file or book, followed by subsequent weekly reprints. Only the most convenient ADMIRALTY Chart is quoted. The full text of all Warnings in force is included in Weeks 1, 13, 26 and 39 each year.

Section IV - Sailing Directions

Updates to all Sailing Directions are given in Section IV of *ADMIRALTY Notices to Mariners*. Those in force at the end of the year are reprinted in NP247(2) *Annual Summary of ADMIRALTY Notices to Mariners Part 2*. A list of updates in force is published in Section IV of the Weekly Edition quarterly. Full details of how to keep Sailing Directions up-to-date can be found in NP294 *How to Keep Your ADMIRALTY Products Up-to-Date*.

In 2018, the UKHO began the process of removing AIS and Racon information from ADMIRALTY Sailing Directions, as this is held in greater detail within ADMIRALTY Radio Signals publications. During this transition, AIS and Racon information will be removed from new editions of each Sailing Direction volume, and AIS and Racon information present in existing Sailing Direction volumes will no longer be updated. For accurate, up-to-date information on AIS and Racons, refer to ADMIRALTY Radio Signals publications.

Section V - Lights

Updates to all the List of Lights are given in Section V and may be published in an earlier edition than the chart-updating notice. The entire entry for each light updated will be printed (including minor changes) and an asterisk (*) will denote which column contains a change. In the case of a new light, or where a new sequence is added below the main light, an asterisk (*) will appear under **all** columns. All Section V entries are intended to be cut out and pasted into the appropriate volume. It is emphasised that the List of Lights is the primary source of information on lights and that many alterations, especially those of a **temporary but operational** nature, are promulgated **only** as updates to the List of Lights. Light positions should be regarded as approximate and are intended to indicate the relative positions of lights only. Charts should be consulted for a more authoritative position. When a light is affected by a separate chart-updating notice, its Light List number is always included in the relevant text contained in Section II. The range of a light is normally the nominal range, except when the responsible authority quotes luminous or geographical range - see special remarks for ranges used by each country.

Section VI - Radio Signals

Updates to all the Radio Signals are given in Section VI. When a chart-updating notice is issued for information that is also included within the Radio Signals, the appropriate volume reference number is quoted, followed in parentheses by the number of the Weekly Edition containing (in Section VI) the corresponding update to the service details. The updates in Section VI should be cut out and pasted into the appropriate volumes.

Section VII - Miscellaneous Publications

Updates to the following selected miscellaneous Nautical Publications are contained in Section VII.

NP100	The Mariner's Handbook
NP133A	Paper Chart Maintenance Record
NP133C	ENC Maintenance Record
NP231	ADMIRALTY Guide to the Practical Use of ENCs
NP232	ADMIRALTY Guide to Implementation, Policy and Procedures
NP294	How to Keep your ADMIRALTY Products Up-to-date
NP136(1)	ADMIRALTY Ocean Passages for the World – Atlantic Ocean
NP136(2)	ADMIRALTY Ocean Passages for the World – Indian and Pacific Oceans
NP350(1)	ADMIRALTY Distance Tables – Atlantic Ocean
NP350(3)	ADMIRALTY Distance Tables – Pacific Ocean
NP350(2)	ADMIRALTY Distance Tables – Indian Ocean
NP735	IALA Maritime Buoyage System
NP5011	Symbols and Abbreviations used on ADMIRALTY Paper Charts
NP5012	ADMIRALTY Guide to ENC Symbols used in ECDIS

All Tides Publications

Nautical Almanac Publications, including Sight Reduction Tables.

Section VIII – ADMIRALTY Digital Services

Information relevant to ADMIRALTY Digital Services.

Further Guidance

The Mariner's Handbook (**NP100**) gives a fuller explanation of the limitations of charts and details of the UKHO policy for the promulgation and selection of navigationally significant information for charts. Details of chart updating methods can be found in "How to Keep Your ADMIRALTY Products Up-to-date" (**NP294**). All users are advised to study these publications.

CAUTIONARY NOTES**Updating**

Updating information is published by Weekly Notices to Mariners supplemented by navigational warnings for items of immediate importance. It should be borne in mind that they may be based on reports which cannot always be verified before promulgation, and that it is sometimes necessary to be selective and promulgate only the more important items to avoid overloading users; the remainder being included in revised editions of the charts and publications concerned.

Laws and Regulations

While, in the interests of the safety of shipping, the UKHO makes every endeavour to include in its publications details of the laws and regulations of all countries appertaining to navigation, it must be clearly understood:-

- (a) that no liability whatsoever can be accepted for failure to publish details of any particular law or regulation, and
- (b) that publication of the details of a law or regulation is solely for the safety and convenience of shipping and implies no recognition of the international validity of the law or regulation.

Reliance on Charts and Associated Publications

While every effort is made to ensure the accuracy of the information on ADMIRALTY charts and within nautical publications, it should be appreciated that it may not always be complete and up-to-date. The mariner must be the final judge of the reliance he can place on the information given, bearing in mind his particular circumstances, local pilotage guidance and the judicious use of available aids to navigation.

Charts

Charts should be used with prudence: there are areas where the source data are old, incomplete or of poor quality. The mariner should use the largest scale appropriate for his particular purpose; apart from being the most detailed, the larger scales are usually updated first. When extensive new information (such as a new hydrographic survey) is received, some months may elapse before it can be fully incorporated in published charts. On small scale charts of ocean areas where hydrographic information is, in many cases, still sparse, charted shoals may be in error as regards position, least depth and extent. Undiscovered dangers may exist, particularly away from well-established routes.

Satellite-Derived Positions and Chart Accuracy

Mariners must not assume that charts which are referred to WGS84 Datum, or those for which shifts to WGS84 Datum are provided, have been surveyed to modern standards of accuracy. On some charts, owing to the age and quality of the source information, some of the charted detail may not be positioned accurately. In such cases mariners are advised to exercise particular caution when navigating in the vicinity of dangers, even when using an electronic positioning system such as GPS. For further details, see The Mariner's Handbook (**NP100**). This applies to both paper and digital (ADMIRALTY Raster Chart Service and ENC) versions of charts.

I

[19/23]

ADMIRALTY Charts affected by the Publication List

ADMIRALTY Charts	ADMIRALTY Charts	ADMIRALTY Charts	International Charts
118	5602_11	AUS 839	INT 1277
375	5602_12	DE 1671	INT 1354
913	5602_15	JP 101B	INT 5254
1187	5602_16	JP 106	
1768	5602_17	JP 150A	ADMIRALTY Publication
2231	5602_19	JP 1103	
2665	5606_2	JP 1266	NP 201A
3599	5607_2	JP 1267	

PAPER CHART SUNSET

The UKHO has announced its intention to withdraw from paper charts. This decision has been taken to allow us to focus on our digital navigation products and services that meet the needs of today's and tomorrow's seafarers.

We expect that we continue to provide paper charts until at least 2030. We will provide more information in this bulletin when we begin the process.

For more information about our decision, timetable, and the impacts, please visit

www.admiralty.co.uk/sunsetting-paper-charts

UKRAINE NAVIGATIONAL INFORMATION

Owing to insufficient information, it is not always possible to ensure that ADMIRALTY Nautical Publications are completely up-to-date for new dangers or changes to aids to navigation.

Mariners are therefore advised to exercise particular caution when navigating in Ukrainian waters.

BALTIC SEA CHART DATUM 2000 (BSCD2000)

UKHO Products and Services, including foreign charts, in the Baltic Sea region are changing to a new vertical reference system for depth and height information. During this transition period, Charts may be referred to either mean sea level or the new BSCD2000. For further information please contact the national charting authority and see ADMIRALTY Sailing Directions.

This note is to be reviewed in 2026.

© denotes chart available in the ADMIRALTY Raster Chart Service series.

I

PHOTOGRAPHY

ADMIRALTY publications utilise imagery from a wide variety of sources, mariners, port authorities and other users. The UK Hydrographic Office (UKHO) welcomes new imagery of navigational aids, landmarks, coastline, approaches to and from ports and berths. Imagery from the mariner's point of view is especially helpful. Images can be sent to the UKHO using the email publications.queries@ukho.gov.uk. Please include the name and location of the feature in the image and how the image should be accredited within ADMIRALTY publications.

ADMIRALTY CHARTS AND PUBLICATIONS NOW PUBLISHED AND AVAILABLE

NEW EDITIONS OF ADMIRALTY CHARTS AND PUBLICATIONS

New Editions of ADMIRALTY Charts published 11 May 2023

<i>Chart</i>	<i>Title, limits and other remarks</i>	<i>Scale</i>	<i>Folio</i>	<i>2023 Catalogue page</i>
©118	Italy - West Coast, Ports in the Gulf of Genoa. Ⓐ Approaches to La Spezia. Ⓑ Rada di La Spezia. Ⓒ Viareggio. Ⓓ Marina di Carrara.	1:50,000 1:11,000 1:10,000 1:10,000	26	42

Includes significant safety-related information as follows: changes to depths, aids to navigation, obstructions, wrecks, dredged areas, coastline, works, marine farms, fairways, and restricted areas.

Note: On publication of this New Edition former Notice 1033(P)/23 is cancelled.

©2665	China - Bo Hai, Tianjin Gang - Bei Gangchi.	1:11,000	52	82
-------	---	----------	----	----

Includes significant safety-related information as follows: changes to depths and coastline.

Note: On publication of this New Edition former Notice 731(P)/23 is cancelled.

© denotes chart available in the ADMIRALTY Raster Chart Service series.

I

ADMIRALTY CHARTS AND PUBLICATIONS NOW PUBLISHED AND AVAILABLE

NEW EDITIONS OF ADMIRALTY CHARTS AND PUBLICATIONS

New Editions of ADMIRALTY Small Craft Charts published 11 May 2023

<i>Chart</i>	<i>Title and other remarks</i>	<i>Scale</i>	<i>NP109A Catalogue page</i>
5602_11	Approaches to Salcombe. <i>Includes full updates for New Edition and Notices to Mariners affecting source charts.</i>	1:12,500	7
5602_12	Ⓐ Salcombe Harbour. Ⓑ Salcombe. <i>Includes full updates for New Edition and Notices to Mariners affecting source charts.</i>	1:12,500 1:5,000	7
5602_15	Ⓐ Plymouth Sound, Northeastern part. Ⓑ River Tavy. <i>Includes full updates for New Edition and Notices to Mariners affecting source charts.</i> <i>Note:</i> This chart is to be deleted from the list of charts affected by Notice 449(P)/23.	1:7,500 1:20,000	7
5602_17	Ⓐ Hamoaze. Ⓑ River Lynher. <i>Includes full updates for New Edition and Notices to Mariners affecting source charts.</i> <i>Note:</i> On publication of this New Edition former Notice 3101(P)/22 is cancelled. This chart is to be deleted from the list of charts affected by Notice 449 (P)/23. This chart remains affected by Notice 434(P)/23.	1:12,500 1:20,000	7
5602_19	Ⓐ River Tamar, Bull Point to Neal Point. Ⓑ Neal Point to Halton Quay. Ⓒ Halton Quay to Cotehele Quay. Ⓓ Cotehele Quay to Calstock. <i>Includes full updates for New Edition and Notices to Mariners affecting source charts.</i> <i>Note:</i> On publication of this New Edition former Notice 3101(P)/22 is cancelled.	1:12,500 1:12,500 1:12,500 1:12,500	7

Reproductions of German Government Charts

<i>Chart</i>	<i>Title and other remarks</i>	<i>Scale</i>	<i>Folio</i>	<i>2023 Catalogue page</i>
ⒸDE1671 INT 1354	International Chart Series, Baltic Sea, Germany and Denmark, Approaches to Rostock and Kadetrinne/Kadetrenden.	1:50,000	10	34
<i>Includes changes to depths. (Published Jointly by the UKHO and by the Hydrographic Office of Germany.)</i>				

Ⓒ denotes chart available in the ADMIRALTY Raster Chart Service series.

I

ADMIRALTY CHARTS AND PUBLICATIONS NOW PUBLISHED AND AVAILABLE

NEW EDITIONS OF ADMIRALTY CHARTS AND PUBLICATIONS

Reproductions of Japan Coast Guard Charts

(Publication dates of these charts reflect the dates shown on the Japan Coast Guard Charts)

Chart	Published	Title and other remarks	Scale	Folio	2023 Catalogue page
JP101B	04/05/2023	Nippon, Seto Naikai, Hanshin Ko, Western Part of Kobe.	1:15,000	54	86
		<i>Includes changes to traffic rules to be implemented at 0000 JST (UTC+9) 01 MAY 2023.</i>			
		<i>Note: On publication of this New Edition former Notices 3764(T)/21 and 3765(T)/21 are cancelled. This chart is to be deleted from the list of charts affected by Notices 202(T)/22, 204(T)/22, 834(T)/22, 1017(P)/23, 1586(P)/23, and 1587(P)/23.</i>			
JP106	04/05/2023	Nippon, Seto Naikai, Osaka Wan and Harima Nada.	1:125,000	54	86
		<i>Includes changes to traffic rules to be implemented at 0000 JST (UTC+9) 01 MAY 2023.</i>			
		<i>Note: This chart is to be deleted from the list of charts affected by Notices 1017(P)/23, 1586(P)/23 and 1587(P)/23. This chart remains affected by Notices 4931(T)/11, 640(T)/12, 3137(T)/13, 1395(T)/17, 2444(T)/17, 4847(T)/17, 6121(T)/20, 6122(T)/20, 2807(T)/21, 2560(T)/22, 3319(T)/22, and 5030(T)/22.</i>			
JP150A	04/05/2023	Nippon, Seto Naikai, Osaka Wan.	1:80,000	54	86
		<i>Includes changes to traffic rules to be implemented at 0000 JST (UTC+9) 01 MAY 2023.</i>			
		<i>Note: This chart is to be deleted from the list of charts affected by Notices 5013(T)/21, 4826(T)/22, 1017(P)/23, 1586(P)/23, and 1587(P)/23. This chart remains affected by Notices 3137(T)/13, 3282(T)/16, 1395(T)/17, 2444(T)/17, 4847(T)/17, 6045(T)/19, 6048(T)/19, 2807(T)/21, 2467(T)/22, 3319(T)/22, 5030(T)/22, 549(T)/23, and 1332(T)/23.</i>			
JP1103	04/05/2023	Nippon, Seto Naikai, Eastern Part of Osaka Wan.	1:45,000	54	86
		<i>Includes changes to traffic rules to be implemented at 0000 JST (UTC+9) 01 MAY 2023.</i>			
		<i>Note: This chart is to be deleted from the list of charts affected by Notices 4724(T)/22, 1017(P)/23, 1586(P)/23, and 1587(P)/23.</i>			

© denotes chart available in the ADMIRALTY Raster Chart Service series.

I

ADMIRALTY CHARTS AND PUBLICATIONS NOW PUBLISHED AND AVAILABLE

NEW EDITIONS OF ADMIRALTY CHARTS AND PUBLICATIONS

Reproductions of Japan Coast Guard Charts

(Publication dates of these charts reflect the dates shown on the Japan Coast Guard Charts) (continued)

<i>Chart</i>	<i>Published</i>	<i>Title and other remarks</i>	<i>Scale</i>	<i>Folio</i>	<i>2023 Catalogue page</i>
JP1266	04/05/2023	Nippon, Kyushu-North and Honshu-Northwest Coasts, Kanmon Ko, Shira Shima and Approaches. <i>Includes changes to harbour limits to be implemented at 0000 JST (UTC+9) 01 MAY 2023.</i> <i>Note:</i> This chart is to be deleted from the list of charts affected by Notice 1589(P)/23	1:15,000	54	86
JP1267	04/05/2023	Nippon, Kyushu-North Coast and Seto Naikai, Western Part of Kanmon Ko. <i>Includes changes to harbour limits to be implemented at 0000 JST (UTC+9) 01 MAY 2023.</i> <i>Note:</i> On publication of this New Edition former Notice 77(T)/23 is cancelled.	1:15,000	54	86

ADMIRALTY Publication

<i>NP No.</i>	<i>Title and other remarks</i>	<i>Date</i>	<i>Remarks</i>
NP201A	ADMIRALTY Tide Tables United Kingdom – English Channel to River Humber (Including Isles of Scilly, Channel Islands and European Channel Ports) Volume 1A, 2024 Edition ISBN Number: 978-0-70-772-2559	11/05/2023	New Edition.

© denotes chart available in the ADMIRALTY Raster Chart Service series.

I

ADMIRALTY CHARTS AND PUBLICATIONS TO BE PUBLISHED

ADMIRALTY CHARTS TO BE PUBLISHED 25 MAY 2023

New Editions of ADMIRALTY Charts

Chart	Title, limits and other remarks	Scale	Charts to be WITHDRAWN	Folio	2023 Catalogue page
375	Mexico - East Coast, Approaches to Veracruz. Ⓐ Ⓑ	1:50,000 1:12,500 1:15,000	⊙375	83	122
<i>Includes significant safety-related information as follows: changes to depths, coastline, lights, buoyage, channels and harbour limits.</i>					
913 INT 5254	International Chart Series, Korea - West Coast, Daeheuksan Gundo to Gyeongnyeolbi Yeoldo.	1:250,000	⊙913 INT 5254	52	82
<i>Includes significant safety-related information as follows: changes to depths and obstructions.</i>					
1187	North Sea, Outer Silver Pit.	1:150,000	⊙1187	7	26, 32
<i>Includes significant safety-related information as follows: New windfarm, changes to depths and buoyage.</i>					
1768	China - Taiwan Strait, Dongshan Wan.	1:30,000	⊙1768	50	80
<i>Includes significant safety-related information as follows: Changes to depths, coastline and fairways.</i>					
2231	Baltic Sea - Lithuania and Latvia, Šventoji to Pāvilosta.	1:100,000	⊙2231 INT 1277	10	36
<i>Includes general updating throughout. This chart is no longer included in the International Chart Series.</i>					
3599	Iran, Bandar-e Shahīd Bāhonar and Bandar-e Shahīd Rajā'ī with Approaches. Ⓐ Bandar-e Shahid Raja'ī. Ⓑ Bandar-e Shahid Bahonar.	1:50,000 1:20,000 1:20,000	⊙3599	40	62
<i>Includes significant safety-related information as follows: changes to depths, buoyage, aids to navigation and coastline.</i>					

⊙ denotes chart available in the ADMIRALTY Raster Chart Service series.

I

ADMIRALTY CHARTS AND PUBLICATIONS TO BE PUBLISHED

ADMIRALTY CHARTS TO BE PUBLISHED 25 MAY 2023

New Editions of ADMIRALTY Small Craft Charts

Chart	Title and other remarks	Scale	Charts to be WITHDRAWN	NP109A Catalogue page
5602_16	Drake Channel to Hamoaze. <i>Includes full updates for New Edition and Notices to Mariners affecting source charts.</i>	1:7,500	5602_16	7
5606_2	Southern Thames Estuary. <i>Includes full updates for New Edition and Notices to Mariners affecting source charts.</i>	1:100,000	5606_2	15
5607_2	Foulness Point to Landguard Point. <i>Includes full updates for New Edition and Notices to Mariners affecting source charts.</i>	1:100,000	5607_2	17

CHARTS TO BE AVAILABLE 25 MAY 2023

New Editions

Reproductions of Australian Government Charts

Chart	Title, limits and other remarks	Scale	Charts to be WITHDRAWN	Folio	2023 Catalogue page
AUS839	Australia - East Coast, Queensland, Cairncross Islets to Arden Island. <i>Includes changes to depths and general updating throughout. (A modified reproduction of AUS839 published by Australia).</i>	1:150,000	⊙AUS839	66	92

⊙ denotes chart available in the ADMIRALTY Raster Chart Service series.

I

ADMIRALTY CHARTS AND PUBLICATIONS PERMANENTLY WITHDRAWN

ADMIRALTY Charts

<i>Chart to be WITHDRAWN</i>	<i>Main Title</i>	<i>On publication of New Chart/New Edition</i>
118	Italy - West Coast, Ports in the Gulf of Genoa.	Ⓢ118
2665	China - Bo Hai, Tianjin Gang - Bei Gangchi.	Ⓢ2665
5602_11	Approaches to Salcombe.	5602_11
5602_12	Salcombe Harbour.	5602_12
5602_15	Plymouth Sound, Northeastern part.	5602_15
5602_17	Hamoaze.	5602_17
5602_19	River Tamar, Bull Point to Neal Point.	5602_19
DE1617 INT 1354	International Chart Series, Baltic Sea, Germany and Denmark, Approaches to Rostock and Kadetrinne/Kadetrenden.	ⓈDE1617 INT 1354
JP101B	Nippon, Seto Naikai, Hanshin Ko, Western Part of Kobe.	JP101B
JP106	Nippon, Seto Naikai, Osaka Wan and Harima Nada.	JP106
JP150A	Nippon, Seto Naikai, Osaka Wan.	JP150A
JP1103	Nippon, Seto Naikai, Eastern Part of Osaka Wan.	JP1103
JP1266	Nippon, Kyushu-North and Honshu-Northwest Coasts, Kanmon Ko, Shira Shima and Approaches.	JP1266
JP1267	Nippon, Kyushu-North Coast and Seto Naikai, Western Part of Kanmon Ko.	JP1267

Ⓢ denotes chart available in the ADMIRALTY Raster Chart Service series.

II

GEOGRAPHICAL INDEX

(1)	Miscellaneous	
(2)	British Isles	2.4 – 2.6
(3)	North Russia, Norway, The Færoe Islands and Iceland	2.7
(4)	Baltic Sea and Approaches	2.7
(5)	North Sea and North and West Coasts of Denmark, Germany, Netherlands and Belgium	2.8 – 2.9
(6)	France and Spain, North and West Coasts, and Portugal	
(7)	North Atlantic Ocean	
(8)	Mediterranean and Black Seas	2.9 – 2.10
(9)	Africa, West Coast and South Atlantic	2.10
(10)	Africa, South and East Coasts, and Madagascar	
(11)	Red Sea, Arabia, Iraq and Iran	
(12)	Indian Ocean, Pakistan, India, Sri Lanka, Bangladesh and Burma	
(13)	Malacca Strait, Singapore Strait and Sumatera	
(14)	China Sea with its West Shore and China	2.11 – 2.12
(15)	Japan	
(16)	Korea and the Pacific Coasts of Russia	2.13
(17)	Philippine Islands, Borneo and Indonesia except Sumatera	2.13
(18)	Australia and Papua New Guinea	2.14
(19)	New Zealand	
(20)	Pacific Ocean	2.14
(21)	Aleutian Islands, Alaska and West Coast of North America including Mexico	
(22)	West Coasts of Central and South America	
(23)	Antarctica	
(24)	East Coast of South America and The Falkland Islands	
(25)	Caribbean Sea, West Indies and the Gulf of Mexico	
(26)	East Coast of North America and Greenland	
(27)	T & P Notices	2.15 – 2.18

II

INDEX OF NOTICES AND CHART FOLIOS

Notice No.	Page	Admiralty Chart Folio	Notice No.	Page	Admiralty Chart Folio
1605(T)/23	2.15	9			
1606(T)/23	2.15	9			
1607	2.9	31			
1608(T)/23	2.17	87			
1609	2.11	47			
1610	2.13	46			
1611*	2.8	7			
1612*	2.4	2, 6			
1613	2.9	30			
1614(T)/23	2.15	9			
1615*	2.6	1, 2			
1616	2.10	30			
1617	2.11	52			
1618	2.11	50			
1619(T)/23	2.16	65			
1620(P)/23	2.18	87			
1621	2.14	66			
1622	2.13	52			
1623(T)/23	2.16	63			
1624	2.11	47			
1625(P)/23	2.16	52			
1626	2.14	68			
1627	2.13	52			
1628(P)/23	2.15	42			
1629	2.11	50			
1630	2.9	9			
1631*	2.10	34			
1632	2.12	45, 46			
1633	2.14	70, 73			
1634	2.10	29			
1635	2.12	50			
1636*	2.9	9			
1637(P)/23	2.17	95			
1638(T)/23	2.15	6			
1639*	2.6	1, 2			
1640	2.7	10			
1641	2.7	13			

II

INDEX OF CHARTS AFFECTED

Admiralty Chart No.	Notices	German Chart No.	Notices
116	1606T, 1630	DE 44	1636
120	1630		
126	1605T	Soloman Islands Chart No.	Notices
128	1614T		
137	1609	SLB 304	1626
190	1612		
246	1616	International Chart No.	Notices
343	1624		
369	1620P	INT 605 INT 606 INT 631 INT 1333 INT 1334 INT 1404 INT 1452 INT 1468 INT 1474 INT 1477 INT 1478 INT 1479 INT 1504 INT 1505 INT 1510 INT 1543 INT 1736 INT 3660 INT 4191 INT 7372	1633 1633 1633 1640 1640 1641 1636 1605T 1606T 1606T, 1630 1614T 1630 1612 1612 1611 1612 1611 1612 1615 1616 1608T 1628P
494	1620P		
517	1608T		
902	1640		
903	1640		
1007	1622		
1061	1634		
1155	1635		
1258	1627		
1335	1637P		
1391	1631		
1407	1612		
1408	1611		
1409	1612		
1430	1641		
1438	1612		
1481	1612		
1504	1611		
1675	1634		
1698	1615		
1738	1629		
1754	1618		
1759	1629		
1763	1635		
1872	1606T		
1874	1606T		
2137	1610		
2214	1607		
2238	1607		
2403	1632		
2632	1613		
2644	1617, 1625P		
2650	1625P		
2764	1608T		
2873	1610		
3282	1638T		
3292	1638T		
3323	1628P		
3418	1639		
3432	1631		
3831	1632		
3949	1632		
4605	1633		
4606	1633		
4631	1633		
5600_16	1639		
5605_14	1615		
5617_1	1612		
5617_13	1612		
5617_15	1612		
5617_2	1612		
Australian Chart No.	Notices		
Aus 53	1623T		
Aus 143	1619T		
Aus 822	1621		

II

1612* SCOTLAND - East Coast - Depths. Drying height. Wrecks.

Source: British Government Survey

Chart 190 [*previous update 4877/22*] ETRS89 DATUM

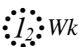
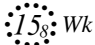
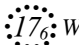
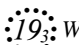
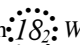

Insert	 Wk	56° 25'·81N., 2° 44'·50W.
	 Wk	(a) 56° 26'·94N., 2° 37'·00W.
Delete	 Wk, close E of:	(a) above
Replace	 Wk with  Wk	56° 38'·83N., 2° 26'·15W.
Delete		56° 32'·95N., 2° 32'·52W.

Chart 1407 (INT 1505) [*previous update 573/23*] ETRS89 DATUM

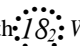
Replace	 Wk with  Wk	56° 38'·83N., 2° 26'·15W.
Delete		56° 32'·95N., 2° 32'·52W.

Chart 1409 (INT 1504) [*previous update 573/23*] ETRS89 DATUM

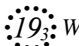
Replace	 Wk with  Wk	56° 38'·83N., 2° 26'·15W.
Delete		56° 32'·97N., 2° 32'·59W.

Chart 1438 (Panel C, Montrose Harbour) [*previous update 1011/23*] ETRS89 DATUM

Insert	depth, 0_9 , and extend 2m contour S to enclose	(a) 56° 42'·133N., 2° 25'·894W.
Delete	depth, I_6 , close N of:	(a) above
Insert	drying height, Q_1 , enclosed by 0m low water line	(b) 56° 41'·943N., 2° 26'·068W.
Delete	depth, I_4 , close SE of:	(b) above
Insert	depth, 0_4 , enclosed by 2m contour	(c) 56° 41'·873N., 2° 26'·180W.
Delete	depth, 3_9 , close SE of:	(c) above

Chart 1438 (Panel E, Arbroath Harbour) [*previous update 1011/23*] ETRS89 DATUM


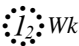
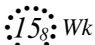
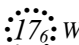
Delete		56° 32'·950N., 2° 32'·520W.
--------	---	-----------------------------

Chart 1481 (INT 1543) [*previous update 247/23*] ETRS89 DATUM

Insert	depth, 0_2 , and extend 2m contour E	56° 25'·25N., 2° 46'·08W.
	 Wk	56° 25'·81N., 2° 44'·50W.
	depth, 0_2	(a) 56° 32'·48N., 2° 36'·31W.
Delete	depth, I_3 , close SE of:	(a) above
Insert	depth, 0_8 , and extend 2m contour SE to enclose	(b) 56° 32'·21N., 2° 36'·60W.
Delete	depth, 3_7 , close SE of:	(b) above
Insert	 Wk	56° 26'·94N., 2° 37'·00W.
Delete	 Wk	56° 26'·94N., 2° 36'·65W.

II

1612* SCOTLAND - East Coast - Depths. Drying height. Wrecks. (continued)

Chart 5617_15 (Panel A, Montrose Harbour) [previous update 653/23] ETRS89 DATUM

Insert	depth, 0_9 , and extend 2m contour S to enclose	(a)	56° 42'·133N., 2° 25'·894W.
Delete	depth, I_6 , close N of:	(a)	above
Insert	drying height, Q_1 , enclosed by 0m low water line	(b)	56° 41'·943N., 2° 26'·068W.
Delete	depth, I_4 , close SE of:	(b)	above

Chart 5617_15 (Panel B, Arbroath Harbour) [previous update 653/23] ETRS89 DATUM

Delete			56° 32'·950N., 2° 32'·520W.
--------	---	--	-----------------------------

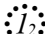
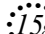
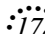
Chart 5617_1 [previous update 628/23] ETRS89 DATUM

Insert	 Wk		56° 25'·81N., 2° 44'·50W.
	 Wk	(a)	56° 26'·94N., 2° 37'·00W.
Delete	 Wk, close E of:	(a)	above

Chart 5617_2 [previous update 628/23] ETRS89 DATUM

Insert	 Wk	(a)	56° 26'·94N., 2° 37'·00W.
Delete	 Wk, close E of:	(a)	above
Replace	 Wk with  Wk		56° 38'·83N., 2° 26'·15W.
Delete			56° 32'·95N., 2° 32'·52W.

Chart 5617_13 [previous update 4877/22] ETRS89 DATUM

Insert	depth, 0_2 , and extend 2m contour E		56° 25'·25N., 2° 46'·08W.
	 Wk		56° 25'·81N., 2° 44'·50W.
	 Wk		56° 26'·94N., 2° 37'·00W.
Delete	 Wk		56° 26'·94N., 2° 36'·65W.

II

1615* ENGLAND - South Coast - Depths.

Source: Dover Harbour Board

Chart 1698 (INT 1736) [*previous update 1085/23*] ETRS89 DATUM

Insert	depth, 1_6 , and extend 2m contour SE to enclose	(a)	51° 07'·162N., 1° 18'·922E.
Delete	depth, 2_1 , close E of:	(a)	above
Insert	depth, 4	(b)	51° 07'·123N., 1° 19'·318E.
Delete	depth, 4_8 , close NE of:	(b)	above
Insert	depth, 3_4	(c)	51° 07'·139N., 1° 19'·318E.
Delete	depth, 3_5 , close NW of:	(c)	above
Insert	depth, 4_3 , and extend 5m contour NE to enclose		51° 07'·143N., 1° 19'·343E.
	depth, 4_9 , and extend 5m contour SW to enclose	(d)	51° 07'·158N., 1° 19'·358E.
Delete	depth, 5_2 , close SW of:	(d)	above
Insert	depth, 4_9 , and extend 5m contour SW to enclose	(e)	51° 07'·114N., 1° 19'·398E.
Delete	depth, 5_4 , close SW of:	(e)	above

Chart 5605_14 (Panel A, Dover) [*previous update 1085/23*] ETRS89 DATUM

Insert	depth, 1_6 , and extend 2m contour SE to enclose	(a)	51° 07'·162N., 1° 18'·922E.
Delete	depth, 2_1 , close E of:	(a)	above
Insert	depth, 4	(b)	51° 07'·123N., 1° 19'·318E.
Delete	depth, 4_9 , close NE of:	(b)	above
Insert	depth, 3_4	(c)	51° 07'·139N., 1° 19'·318E.
Delete	depth, 3_5 , close NW of:	(c)	above
Insert	sounding out of position, 4_3 , enclosed by 5m contour		51° 07'·143N., 1° 19'·342E.
	depth, 4_9 , and extend 5m contour SW to enclose	(d)	51° 07'·158N., 1° 19'·358E.
Delete	depth, 5_2 , close SW of:	(d)	above
Insert	depth, 4_9 , and extend 5m contour SW to enclose	(e)	51° 07'·114N., 1° 19'·398E.
Delete	depth, 5_4 , close SW of:	(e)	above

1639* ENGLAND - South Coast - Drying height.

Source: Shoreline Surveys Ltd

Chart 3418 [*previous update New Edition 13/04/2023*] ETRS89 DATUM

Insert	drying height, 1_1 , and extend 0m low water line NW to enclose		50° 48'·81N., 1° 01'·47W.
--------	---	--	---------------------------

Chart 5600_16 (Panel A, Langstone Harbour) [*previous update 1061/23*] ETRS89 DATUM

Insert	drying height, 1_1 , and extend 0m low water line NW to enclose		50° 48'·81N., 1° 01'·47W.
--------	---	--	---------------------------

II

1641 NORWAY - West Coast - Depths.

Source: Norwegian Chart 310

Chart 1430 (INT 1404) [*previous update 216/23*] WGS84 DATUM

Insert	depth, 52	67° 17'·9N., 13° 50'·3E.
	depth, 54	(a) 67° 16'·1N., 13° 50'·1E.
Delete	depth, 210, close SW of:	(a) above
Insert	depth, 143	67° 14'·7N., 13° 33'·1E.
	depth, 113	(b) 67° 12'·3N., 13° 54'·0E.
Delete	depth, 342, close W of:	(b) above
Insert	depth, 38	(c) 67° 10'·1N., 13° 33'·4E.
Delete	depth, 74, close N of:	(c) above
Insert	depth, 52	(d) 67° 05'·4N., 13° 30'·6E.
Delete	depth, 125, close SW of:	(d) above
Replace	depth, 60, with depth, 30	67° 11'·3N., 13° 34'·5E.

1640 DENMARK - Islands - Buoyage.

Source: Danish Chart Correction 39/381/22

Chart 902 (INT 1334) (Panel A, Northern Part) [*previous update 1391/23*] WGS84 DATUM

Insert	 Fl(5)Y.20s Rec. St	55° 41'·928N., 12° 37'·812E. 55° 41'·520N., 12° 37'·992E.
--------	---	--

Chart 903 (INT 1333) [*previous update 759/23*] WGS84 DATUM

Insert	 Fl(5)Y.20s Rec. St	55° 41'·93N., 12° 37'·81E. 55° 41'·52N., 12° 37'·99E.
--------	--	--

II

1611* NORTH SEA - Submarine cable.

Source: Seagard

Note: Former Notice 3799(P)/21 is cancelled.

Chart 1408 [previous update 1513/23] WGS84 DATUM

Insert submarine cable, ~~~, joining:

52° 27′.3N., 4° 33′.4E.
52° 26′.8N., 4° 31′.6E.
52° 26′.9N., 4° 25′.1E.
52° 28′.6N., 4° 12′.5E.
52° 29′.2N., 4° 11′.2E.
52° 29′.8N., 3° 55′.3E.
52° 32′.0N., 3° 51′.3E.
52° 31′.1N., 3° 40′.1E.
52° 28′.8N., 3° 31′.8E.
52° 31′.7N., 3° 25′.4E.
52° 30′.2N., 3° 08′.6E.
52° 30′.6N., 2° 15′.1E.
52° 30′.2N., 2° 11′.7E.
52° 26′.6N., 2° 08′.7E.
52° 26′.5N., 1° 57′.9E.

Chart 1504 (INT 1510) [previous update 1549/23] ETRS89 DATUM

Insert submarine cable, ~~~, joining:

52° 27′.04N., 1° 48′.00E.
52° 26′.30N., 2° 00′.90E.
52° 26′.48N., 2° 07′.11E.
52° 27′.21N., 2° 09′.57E.
52° 30′.23N., 2° 11′.69E.
52° 30′.68N., 2° 14′.53E.
52° 30′.81N., 2° 20′.81E.
52° 30′.44N., 2° 23′.83E.
52° 30′.27N., 2° 48′.23E.
52° 30′.55N., 2° 58′.01E.
52° 30′.18N., 3° 08′.59E.
52° 31′.75N., 3° 25′.38E.
52° 30′.68N., 3° 28′.38E.

II

1630 NETHERLANDS - Beacons.

Source: Netherlands Notice 15/105/23

Chart 116 (INT 1477) [previous update 5145/22] WGS84 DATUM

Delete  HFP 1 51° 22'·47N., 3° 40'·38E.

Chart 120 (INT 1479) (Panel D, Hansweert) [previous update 1441/23] WGS84 DATUM

Delete  HAN 1 51° 26'·80N., 3° 59'·96E.

Chart 120 (INT 1479) [previous update 1441/23] WGS84 DATUM

Delete  HFP 1 51° 22'·47N., 3° 40'·38E.

 HAN 1 51° 26'·80N., 3° 59'·96E.

1636* GERMANY - North Sea Coast - Buoyage.

Source: WSA Elbe-Nordsee 102/23

Chart DE 44 (INT 1452) [previous update 1531/23] WGS84 DATUM

Delete  Fl(5)Y.20s ODAS 53° 58'·08N., 8° 36'·00E.
53° 56'·75N., 8° 39'·48E.

1607 TURKEY - Black Sea Coast - Light.

Source: Turkish Notice 47/189/22

Chart 2214 [previous update 1078/23] WGS84 DATUM

Delete  41° 05'·2N., 31° 05'·5E.

Chart 2238 [previous update 2451/21] WGS84 DATUM

Delete  Fl.5s15m10M 41° 05'·2N., 31° 05'·8E.

1613 TURKEY - South Coast - Buoyage.

Source: Turkish Notice 49/200/22

Chart 2632 [previous update 4565/22] WGS84 DATUM

Insert  Fl(2)Y.10s (3 buoys) 36° 45'·8N., 34° 45'·5E.

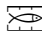
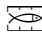
Delete  (3 buoys) 36° 45'·1N., 34° 45'·1E.

II

1616 TURKEY - South Coast - Marine farms.

Source: Turkish Notice 52/213/22

Chart 246 (INT 3660) [*previous update 4379/22*] WGS84 DATUM

Insert	limit of marine farm, pecked line, joining:	<p>(a) 36° 39′.68N., 35° 41′.42E.</p> <p>(b) 36° 43′.21N., 35° 46′.68E.</p> <p>(c) 36° 42′.75N., 35° 47′.33E.</p> <p>(d) 36° 43′.12N., 35° 47′.88E.</p> <p>(e) 36° 42′.36N., 35° 48′.84E.</p> <p>(f) 36° 37′.36N., 35° 41′.70E.</p> <p>(g) 36° 37′.68N., 35° 41′.32E.</p>
	 , within:	(a)-(g) above
Delete		<p>36° 44′.39N., 35° 43′.47E.</p> <p>36° 34′.94N., 35° 25′.35E.</p>

1634 TURKEY - West Coast - Lights.

Source: Turkish Notice 49/199/22

Note: AIS remains unchanged

Chart 1061 [*previous update 2146/21*] WGS84 DATUM

Amend	light to, Fl(2)10s5M	39° 19′.30N., 26° 31′.59E.
	light to, Fl.3s5M	39° 17′.03N., 26° 36′.20E.

Chart 1675 (Panel E, Approaches to Ayvalik) [*previous update 998/23*] WGS84 DATUM

Amend	light to, Fl(2)10s19m5M	39° 19′.28N., 26° 31′.61E.
	light to, Fl.3s18m5M	39° 17′.02N., 26° 36′.18E.

1631* GHANA - Depths. Light. Radar beacon.

Source: Ghana Ports and Harbours Authority

Chart 1391 [*previous update 1464/23*] WGS84 DATUM

Insert	depth, $I6_5$	5° 36′.962N., 0° 00′.359W.
	depth, $I6_3$	5° 36′.827N., 0° 00′.379W.
	depth, $I7_2$	5° 36′.933N., 0° 01′.366E.

Chart 3432 [*previous update 4417/22*] WGS84 DATUM

Move	★ Mo(U)R.14M and associated radar beacon, Racon(Q),	
	from:	5° 37′.61N., 0° 01′.15E.
	to:	5° 37′.59N., 0° 01′.46E.

II

1609 CHINA - South Coast - NM Block.

Source: Chinese Chart 15831

Chart 137 [*previous update 364/23*] CGCS 2000 DATUM

Insert the accompanying block, centred on: 20° 03′·9N., 110° 13′·8E.

1617 CHINA - Bo Hai - NM Block.

Source: Chinese Notice 3/41/23

Chart 2644 [*previous update 4666/22*] CGCS 2000 DATUM

Insert the accompanying block, centred on: 38° 21′·8N., 117° 50′·9E.

1618 CHINA - East Coast - Depth.

Source: Chinese Notice 12/308/23

Chart 1754 [*previous update 814/23*] WGS84 DATUM

Insert depth, 7₃ 27° 33′·4N., 120° 52′·6E.

1624 CHINA - South Coast - Depth.

Source: UKHO

Chart 343 [*previous update 1426/23*] CGCS 2000 DATUM

Insert depth, 5, and extend 5m contour SW to enclose 22° 32′·79N., 113° 43′·94E.

1629 CHINA - East Coast - Virtual aid to navigation. Buoy.

Source: Chinese Notice 7/145/23

Chart 1738 [*previous update 936/23*] CGCS 2000 DATUM

Delete symbol, Virtual aid to navigation, isolated danger topmark, V-AIS, out of position 28° 56′·44N., 121° 56′·23E.

symbol, blue and yellow emergency wreck marking buoy,
Al.Oc.BuY.3s (2 buoys) 28° 56′·27N., 121° 56′·18E.

Chart 1759 [*previous update 1546/23*] CGCS 2000 DATUM

Delete symbol, Virtual aid to navigation, isolated danger topmark, V-AIS, out of position 28° 56′·4N., 121° 56′·2E.

symbol, blue and yellow emergency wreck marking buoy,
Al.Oc.BuY.3s (2 buoys) 28° 56′·3N., 121° 56′·2E.

II

1632 SOUTH CHINA SEA - Legends.

Source: UKHO

Chart 2403 [previous update 4992/22] WGS84 DATUM


Insert  legend, *Fishing Stakes (see Note)*, centred on: 1° 19′.4N., 104° 35′.6E.
1° 12′.3N., 104° 40′.3E.

Chart 3831 [previous update 1547/23] WGS84 DATUM



Insert  legend, *Fishing Stakes (see Note)*, centred on: 1° 19′.3N., 104° 35′.5E.

Chart 3949 [previous update 1032/23] WGS84 DATUM


Insert  legend, *Fishing Stakes (see Note)*, centred on: 1° 12′.3N., 104° 40′.3E.

1635 CHINA - East Coast - Buoyage.

Source: Chinese Notice 8/161/23

Chart 1155 [previous update 1418/23] CGCS 2000 DATUM

Insert  *Mo(O)Y.12s LNG4* 28° 00′.71N., 121° 04′.35E.

 *Mo(O)Y.12s LNG3* 28° 00′.70N., 121° 05′.04E.

 *Mo(O)Y.12s LNG2* 28° 00′.17N., 121° 05′.41E.

Chart 1763 (Panel A, Wenzhou Wan) [previous update 97/23] WGS84 DATUM

Insert  *Mo(O)Y.12s LNG4* 28° 00′.71N., 121° 04′.36E.

 *Mo(O)Y.12s LNG3* 28° 00′.70N., 121° 05′.04E.

 *Mo(O)Y.12s LNG2* 28° 00′.17N., 121° 05′.41E.

II

1622 KOREA - West Coast - Depths. Maritime limit. Legend. Alongside depths. Anchor berths. Swinging circles.

Source: ENC's KR64647A, KR64648A, KR64649A and KR64657A

Chart 1007 [*previous update 4866/22*] WGS84 DATUM





Insert	depth, <i>11</i> ₁	(a)	34° 46'·735N., 126° 25'·312E.
Delete	depth, <i>12</i> ₁ , close SE of:	(a)	above
Insert	maritime limit, pecked line, joining:	(b)	34° 44'·802N., 126° 19'·319E.
		(c)	34° 44'·811N., 126° 19'·374E.
		(d)	34° 44'·735N., 126° 19'·449E.
		(e)	34° 44'·703N., 126° 19'·447E.
		(f)	34° 44'·684N., 126° 19'·439E.
	legend, <i>Unsurveyed Area</i> , within:	(b)-(f)	above
Replace	depth, <i>9</i> ₂ , with alongside depth, · (<i>8</i> ₉)		34° 46'·670N., 126° 25'·398E.
	depth, <i>9</i> ₄ , with alongside depth, · (<i>9</i>)		34° 46'·594N., 126° 25'·111E.
	depth, <i>12</i> ₁ , with depth, <i>11</i> ₈		34° 46'·043N., 126° 19'·801E.
Delete	 1, and associated swinging circle, pecked line, centred on:		34° 46'·500N., 126° 23'·200E.
	 3, and associated swinging circle, pecked line, centred on:		34° 46'·669N., 126° 23'·835E.
	depth, <i>6</i>		34° 44'·795N., 126° 19'·339E.
	depth, <i>8</i> ₂		34° 44'·738N., 126° 19'·426E.

Chart 1007 (Panel, Mokpo Hang Myoji) [*previous update 4866/22*] WGS84 DATUM

Delete	 1, and associated swinging circle, pecked line, centred on:		34° 46'·500N., 126° 23'·200E.
	 3, and associated swinging circle, pecked line, centred on:		34° 46'·668N., 126° 23'·834E.

1627 KOREA - West Coast - Light. Light-beacon.

Source: Korean Notice 3/43/23

Chart 1258 [*previous update 1018/23*] WGS84 DATUM

Amend	range of light to, 8M		36° 53'·1N., 126° 10'·7E.
	range of light-beacon to, 8M		36° 50'·7N., 126° 10'·6E.

1610 INDONESIA - Java Sea - Depth.

Source: UKHO and ENC ID400064

Chart 2137 [*previous update 797/23*] WGS84 DATUM

Delete	depth, <i>14</i> , and associated 20m contour		2° 58'·78S., 107° 18'·34E.
--------	---	--	----------------------------

Chart 2873 [*previous update 797/23*] WGS84 DATUM

Delete	depth, <i>14</i> , and associated 20m contour		2° 58'·8S., 107° 18'·3E.
--------	---	--	--------------------------

II

1621 AUSTRALIA - Queensland - NM Block.

Source: Australian Notice 8/305/23

Chart Aus 822 [*previous update 3965/22*] WGS84 DATUM

Insert the accompanying block, centred on: 22° 00′.6S., 150° 00′.9E.

1626 SOUTH PACIFIC OCEAN - Solomon Islands - Light.

Source: Australian Notice 8/314/23

Chart SLB 304 [*previous update 4009/22*] WGS84 DATUM

Amend light to, Q(2)G.10s5M 8° 46′.8S., 160° 41′.6E.

1633 SOUTH PACIFIC OCEAN - Tonga Islands - Lights.

Source: New Zealand Notice 8/33/23

Chart 4605 (INT 605) [*previous update 81/21*] WGS84 DATUM

Delete  20° 17′.3S., 174° 48′.2W.

Chart 4606 (INT 606) [*previous update New Edition 03/09/2020*] WGS84 DATUM

Delete  20° 17′.2S., 174° 48′.9W.

Chart 4631 (INT 631) [*previous update 3957/22*] WGS84 DATUM

Delete  Q(3)10M 19° 59′.9S., 174° 47′.7W.

 Fl(2)10M 20° 16′.1S., 174° 49′.0W.

II

1638(T)/23 SCOTLAND - Shetland Islands - Light.

Source: Shetland Islands Council Notice 5/23

1. The sectors at light, Fl(2)WRG.10s3m4M, in position 60° 41′.858N., 0° 59′.698W., are reported as unreliable.
2. Mariners are advised to navigate with caution in the area.
(ETRS89 DATUM)

Charts affected - 3282 - 3292

1605(T)/23 NETHERLANDS - Buoyage.

Source: Netherlands Notice 15/108(T)/23

1. West cardinal light-buoys have been established in the following positions:

<i>Characteristic</i>	<i>Designation</i>	<i>Position</i>
<i>Q(9)15s</i>	<i>ZINK-W 1</i>	52° 49′.70N., 4° 40′.27E.
<i>VQ(9)10s</i>	<i>ZINK-W 2</i>	52° 50′.57N., 4° 39′.58E.

(WGS84 DATUM)

Chart affected - 126 (INT 1468)

1606(T)/23 NETHERLANDS - Buoy.

Source: Netherlands Notice 15/106(T)/23

1. A north cardinal buoy, *Q*, *ZINK-N*, has been established in position 51° 24′.12N., 3° 26′.97E.
(WGS84 DATUM)

Charts affected - 116 (INT 1477) - 1872 - 1874 (INT 1474)

1614(T)/23 BELGIUM - Obstruction. Buoyage.

Source: Belgian Notice 20/219(T)/22

1. An obstruction, depth 4.2m, marked by special light-buoys, *FL.Y.4s* exists in position 51° 19′.16N., 4° 16′.55E.
(WGS84 DATUM)

Chart affected - 128 (INT 1478)

1628(P)/23 INDIAN OCEAN - Maldives - Coastline. Breakwater. Works.

Source: UKHO

1. Breakwater construction and land reclamation works have been completed to the north of Hulule and Hulhumale' between positions 4° 12′.11N., 73° 31′.59E. and 4° 14′.48N., 73° 32′.82E.
2. Mariners are advised to navigate with caution in the area.
3. These and other changes will be included in the next New Edition of Chart 3323 to be published mid 2023.
(WGS84 DATUM)

Chart affected - 3323 (INT 7372)

II

1625(P)/23 CHINA - Bo Hai - Buoyage. Beacons. Lights.

Source: Chinese Notices 12/296/23 and 298-300/23

1. Significant changes to buoyage and beacons have taken place within the South Huanghua Gang Gangchi approach channel and inside the port, between positions 38° 31′.63N., 118° 19′.52E. and 38° 19′.56N., 117° 52′.12E.
2. Lights have been established in the following positions:

<i>Position</i>	<i>Characteristic</i>
38° 21′.42N., 117° 50′.98E.	Mo(C)Y.15s5m4M
38° 21′.34N., 117° 51′.07E.	Mo(C)Y.15s5m4M

3. Mariners are advised to navigate with caution in the area and consult the local port authorities for the latest information.
4. These and other changes will be included in the next New Editions of Chart 2644 and 2650.
(CGCS 2000 DATUM)

Charts affected - 2644 - 2650

1619(T)/23 AUSTRALIA - Victoria - Works. Light-beacons.

Source: Australian notice 8/334(T)/23

1. Vessels *Dangerfield*, *Matilda Mae* and *Taylia-Rose* are conducting maintenance works on the following light beacons:

<i>Type</i>	<i>Characteristic</i>	<i>Position</i>
Starboard lateral light beacon	Fl(2)G.4s	38° 11′.94S., 144° 45′.85E.
Starboard lateral light beacon	Fl(2)G.4s	38° 13′.03S., 144° 44′.40E.
Port lateral light beacon	Fl(2)R.4s	38° 13′.04S., 144° 43′.97E.
Starboard lateral light beacon	Fl(2)G.4s	38° 14′.81S., 144° 43′.19E.
Port lateral light beacon	Fl(2)R.4s	38° 15′.62S., 144° 42′.42E.

2. An 100m exclusion zone with no wake exists around each light beacon during the works.
3. Mariners are advised to navigate with caution in the area with minimal wash.
(WGS84 DATUM)

Chart affected - Aus 143

1623(T)/23 AUSTRALIA - Western Australia - Buoyage.

Source: Australian Notice 8/330(T)/23

1. Special light-buoys, *Q, Y*, exist in the following positions:

<i>Positions</i>	<i>Remarks</i>
20° 16′.79S., 118° 34′.86E.	130m exclusion zone exists around the buoy
20° 17′.11S., 118° 35′.51E.	130m exclusion zone exists around the buoy
20° 17′.25S., 118° 30′.88E.	125m exclusion zone exists around the buoy

2. Mariners are advised to navigate with caution in the area.
(WGS84 DATUM)

Chart affected - Aus 53

II

1637(P)/23 ARGENTINA - Fairway. Buoyage. Depths.

Source: ENC AR401450

1. Fairway limits and buoyage within Río Paraná have changed.
2. The most significant changes to the fairway limits have taken place between the following positions:

32° 18′.52S., 60° 40′.91W.

and

32° 11′.52S., 60° 41′.45W.

3. Depths less than charted exist within Río Paraná. The most significant are as follows:

Depth	Position
9.9m	32° 38′.71S., 60° 44′.43W.
9.1m	32° 34′.39S., 60° 47′.08W.
8.7m	32° 22′.95S., 60° 42′.79W.
8.8m	32° 19′.45S., 60° 40′.86W.
6.9m	32° 28′.15S., 60° 44′.08W.
6.6m	32° 20′.65S., 60° 44′.57W.
1.9m	32° 10′.90S., 60° 41′.94W.
6.9m	32° 28′.51S., 60° 44′.11W.
8.6m	32° 24′.35S., 60° 42′.91W.
3.5m	32° 24′.47S., 60° 43′.03W.
8.4m	32° 23′.57S., 60° 42′.63W.
3.6m	32° 18′.34S., 60° 40′.92W.
1.5m	32° 16′.81S., 60° 40′.97W.
3.4m	32° 15′.92S., 60° 40′.65W.
4m	32° 11′.58S., 60° 41′.50W.
9.3m	32° 06′.16S., 60° 39′.59W.
2.7m	32° 04′.49S., 60° 39′.87W.

4. Mariners are advised to navigate with caution in the area and consult the local port authorities for the latest information.
5. These changes will be included in the next New Edition of Chart 1335 to be published mid 2023.
(WGS84 DATUM)

Chart affected - 1335

1608(T)/23 SURINAME - Scientific instruments. Buoy.

Source: Maritieme Autoriteit Suriname NM 26(T)/23

1. Scientific instruments have been established within the water column in the following positions:

7° 22′.8N., 55° 55′.6W.

7° 22′.5N., 55° 54′.2W.

7° 22′.1N., 55° 52′.9W.

2. A special light buoy, *FL.Y.5s*, has been deployed in position 7° 15′.4N., 55° 54′.6W.
3. Mariners are advised to navigate with caution in the area.
(WGS84 DATUM)

Charts affected - 517 - 2764 (INT 4191)

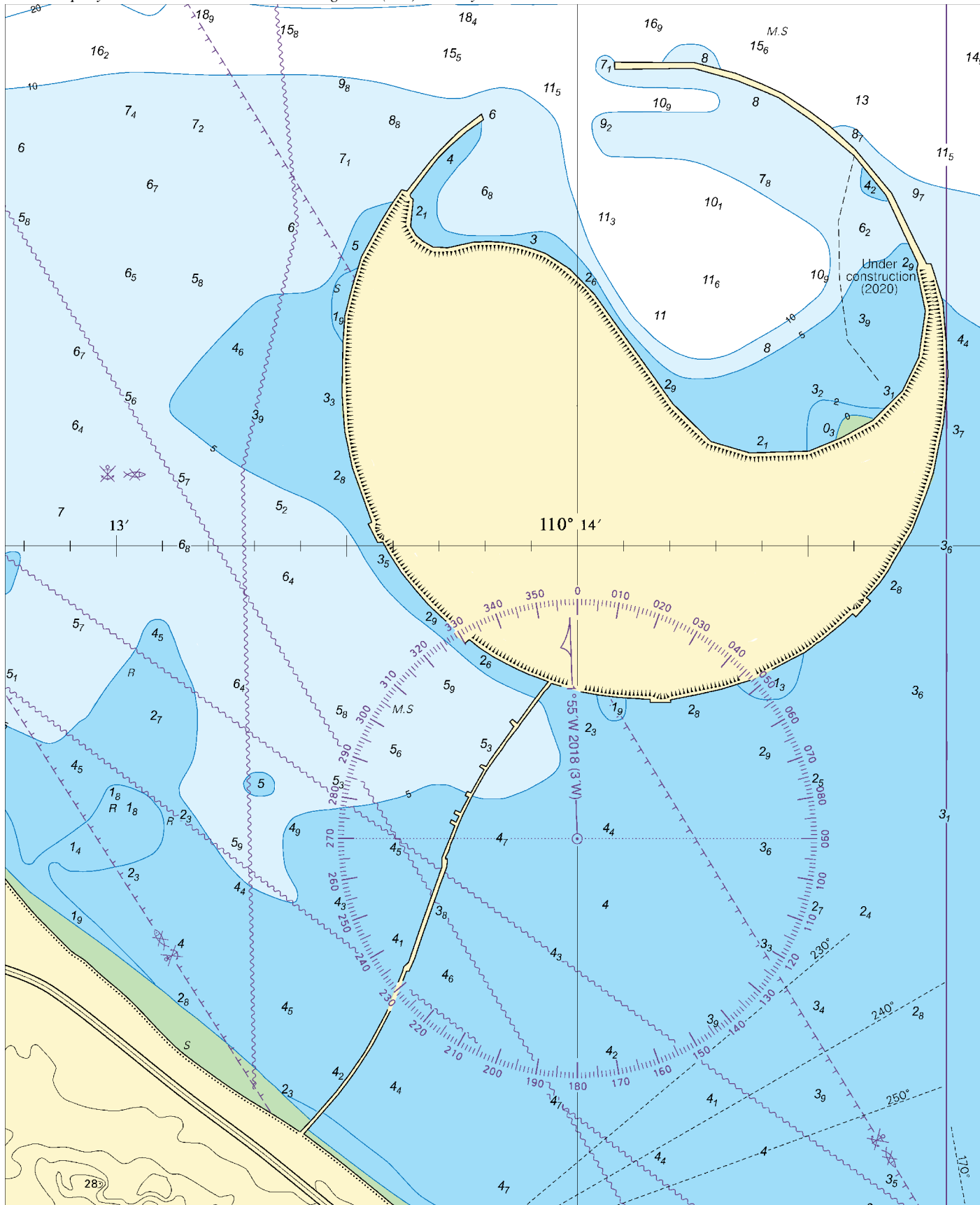
II

1620(P)/23 WEST INDIES - Windward Islands - Wreck.

Source: French Notice 12/08(P)/23

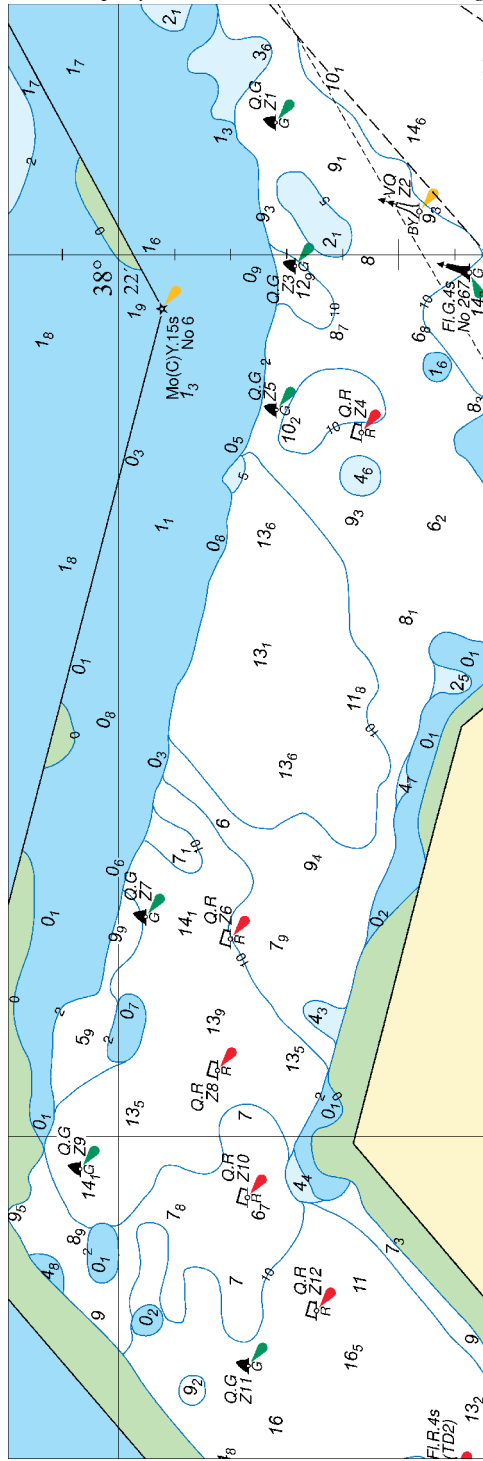
1. A wreck has been reported in position 14° 39′.97N., 60° 55′.35W.
2. Mariners are advised to navigate with caution in the area.
(WGS84 DATUM)

Charts affected - 369 - 494



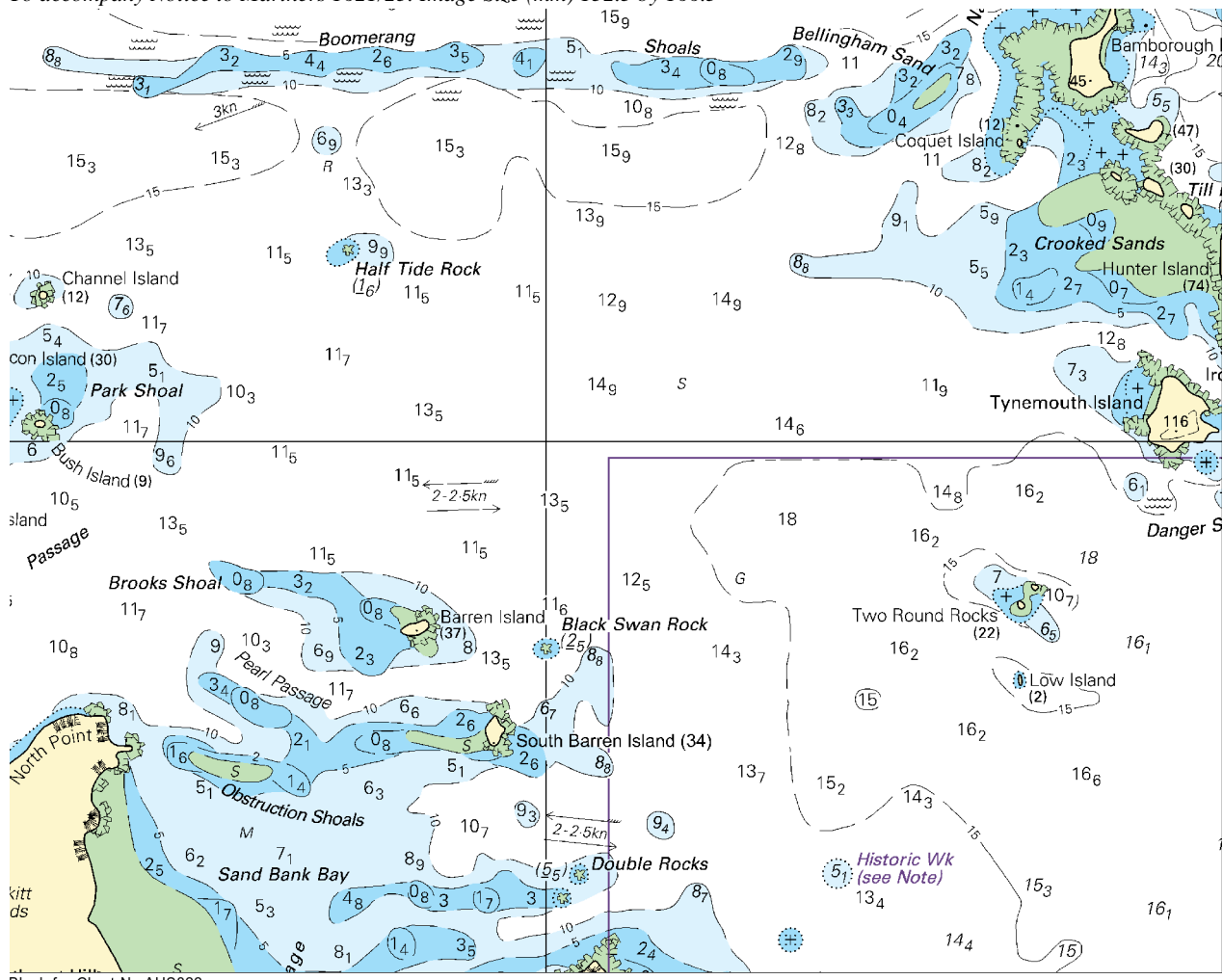
Block for Chart No 137

To accompany Notice to Mariners 1617/23. Image Size (mm) 192.3 by 63



Block for Chart No 2644

To accompany Notice to Mariners 1621/23. Image Size (mm) 132.3 by 166.3



Block for Chart No AUS822

III

NAVIGATIONAL WARNINGS

See *The Mariner's Handbook (2020 Edition)*. Only the most convenient ADMIRALTY Chart is quoted. All warnings issued within the previous 42 days are broadcast via Enhanced Group Call (EGC) and/or NAVTEX.

The complete texts of all in-force NAVAREA I warnings, including those which are no longer being broadcast, are available from www.admiralty.co.uk/RNW. Additionally, a quarterly cumulative list of the complete text of all in-force NAVAREA I Warnings is included in Section III of the Weekly NM Bulletin in Weeks 1, 13, 26 and 39 each year.

Alternatively, these may be requested by e-mail from NAVAREA I Co-ordinator at: navwarnings@ukho.gov.uk

The RNW web page also contains a link to the IHO website which allows direct access to all the other NAVAREA Co-ordinators around the world who have made their NAVAREA warnings available on the web.

Weekly Edition 19 published on the UKHO website 28 Apr 23.

Navarea I (NE Atlantic) *Weekly Edition 19*

The following NAVAREA I warnings were in force at 280500 UTC Apr 23.

2022 series: 220, 226.

2023 series: 042, 050, 055, 057, 058, 059, 063.

Summary of Navarea I warnings issued since Weekly Edition 18:

063 1. RIGLIST. Correct at 280500 UTC Apr 23.

Southern North Sea: 51N to 55N

52-33.2N	003-44.5E	Noble Resolute (ex Maersk) ACP Horizon P9-6
52-44.3N	003-48.2E	Swift 10 ACP P6-B
53-00.0N	001-50.8E	Valaris 72 ACP Hewett Gas Field
53-14.0N	003-14.5E	590021 ACP Allseas Test
53-14.5N	001-26.9E	Noble Hans Deul ACP Blythe
53-19.4N	002-34.5E	Seafox 7 ACP 49/23-AQ
53-21.9N	001-39.1E	Well Safe Protector ACP Anglia Gas Field
53-31.3N	004-18.1E	Prospector 1
53-36.9N	004-57.5E	Seafox 4 ACP L9-FF-1
53-37.4N	004-08.6E	Seajacks Hydra ACP L7-H
53-48.2N	001-12.5E	Haeva ACP Hoton Gas Field
53-49.5N	000-28.2E	Valaris Norway ACP Rough Gas Field
53-58.7N	006-55.1E	Seafox 2 ACP Dolwin Beta
54-04.4N	000-54.9E	Valaris 247 ACP Ravenspurn South Gas Field
54-14.7N	002-09.2E	EnSCO 92 ACP Boulton Gas Field
54-35.7N	000-26.0E	Noble Resilient (ex Maersk) ACP Breagh Gas Field
54-39.7N	000-48.1E	Valaris 123

North Sea: 55N to 60N, East of 5W

NEW	55-28.8N	005-06.4E	Noble Reacher (ex Maersk) ACP Dan Oil Field
	55-31.8N	005-00.4E	Noble Sam Turner ACP Halfdan Oil Field
	56-10.6N	003-27.6E	Noble Integrator (ex Maersk) ACP Hod Oil Field
	56-20.7N	004-16.2E	Noble Interceptor (ex Maersk) ACP Harald Gas Field
	56-23.5N	002-53.5E	Linus
	56-25.4N	003-13.6E	West Elara ACP Eldfisk Oil Field
	56-35.0N	002-28.6E	Valaris 120
	56-40.5N	005-24.7E	Noble Resolve ACP Nimi Field
	57-02.0N	001-56.6E	Valaris 122 ACP 22/30b-A,C
	57-05.5N	000-57.6E	Ocean Endeavor
	57-09.2N	001-40.4E	Valaris Gorilla VI
	57-48.9N	004-32.0E	Maersk Inspirer ACP YME Oil Field
	57-57.1N	001-12.8E	Well Safe Defender
	57-58.1N	000-53.6E	Paul B Loyd Jr
	58-00.8N	000-55.4W	COSL Innovator
	58-18.5N	001-41.4W	COSL Pioneer
	58-48.4N	002-42.6E	Deepsea Atlantic
	58-50.6N	002-14.9E	Noble Invincible (ex Maersk) ACP Edvard Grieg
	59-11.9N	002-24.7E	West Phoenix
	59-15.8N	002-37.3E	Deepsea Aberdeen
	59-29.7N	002-01.5E	Deepsea Nordkapp
	59-32.0N	001-24.4E	Ocean Patriot
	59-53.3N	002-23.0E	Scarabeo 8

III

Norwegian Sea: 60N to 65N, East of 5W

60-14.4N	004-30.3W	Ocean Greatwhite
60-21.3N	002-54.0E	Askepott
60-51.4N	003-26.3E	Transocean Endurance
60-58.6N	002-11.2W	Transocean Barents
61-01.2N	003-09.7E	Deepsea Yantai
61-02.4N	002-20.2E	Noble Lloyd Noble ACP Valemon
61-08.1N	002-01.0E	Askeladden
61-19.5N	001-59.1E	COSL Promoter
61-23.0N	002-03.0E	Transocean Spitsbergen
61-26.0N	002-35.2E	Transocean Enabler
64-37.4N	006-28.2E	Deepsea Stavanger

South and West Coasts of the British Isles

NEW 53-37.9N 003-10.6W Irish Sea Pioneer ACP Lennox Oil and Gas Field

NOTES:

- A. Rigs are protected by a 500 metre safety zone.
- B. ACP - Adjacent to Charted Platform.
- C. For Rigs located North of 65N, East of 5W, refer to Navarea XIX Warnings or visit www.navarea-xix.no

- 2. Cancel 061/23.

UPDATES TO ADMIRALTY SAILING DIRECTIONS

NP7 South America Pilot Volume 3 (2022 Edition)

Ecuador - Approaches to Guayaquil - Posorja — Arrival information; restricted area

340

After Paragraph 11.126 *1 Insert:*

Restricted area. Unauthorised entry is prohibited within an area (2°43'33S 80°14'57W) extending about 1¼ cables from the shore and encompassing the fishing jetties S of the town centre.

Ecuadorian Notice 11 B 23 [NP7-No 5-Wk 19/23]

NP63 Persian Gulf Pilot (2021 Edition)

United Arab Emirates - Abu Dhabi - Muşaffaḥ Port — Limiting conditions

163

Paragraph 7.245 including existing Section IV Notice Week 31/21 *Replace by:*

1 Controlling depth. Muşaffaḥ Channel (Khawr al Baḥīn) (24°28'56N 54°18'13E) is dredged to 6.0 m (2014). New Muşaffaḥ Channel (24°32'68N 54°13'98E) is dredged to 9.0 m (2010). Draught regulations are in force (see 7.246).

2 Under-keel clearance. All vessels are to maintain UKC of at least 1 m when navigating within Muşaffaḥ Port. The Harbour Master may stipulate a greater UKC if the size or configuration of the vessel, the weather and other circumstances make it necessary.

3 Vertical clearance. Muşaffaḥ Channel is spanned by Hudayriyat Bridge (24°25'59N 54°22'06E), with a vertical clearance of 28.3 m, linking the W coast of Abu Dhabi to Jazīrat Hudayriyat.

The maximum permitted air draught for the passing under the Hudayriyat Bridge is 26 m. Subject to approval, an air draught of up to 28 m may be allowed during a low tide window. Passage under the bridge is one-way only.

4 The S end of Khawr al Maḥṭa', between Muşaffaḥ Channel and Sās an Nakhl Refinery (7.237), is spanned by three bridges:

Muşaffaḥ Bridge, the S bridge, has a vertical clearance of 9.0 m;

Al Maḥṭa' Bridge, the middle bridge, has a vertical clearance of 4.7 m;

Sheikh Zayed Bridge, the N bridge; vertical clearance unknown.

Abu Dhabi Ports Notice 04/23

[NP63-No 96-Wk 19/23]

United Arab Emirates - Abu Dhabi - Muşaffaḥ Port — Arrival information

163-164

Paragraph 7.246 *Replace by:*

1 Vessel traffic service. The channels are under radar surveillance by Muşaffaḥ VTS for the control of shipping. For details and list of reporting points see *ADMIRALTY List of Radio Signals Volume 6(8)*. Positions of reporting points are shown on charts.

2 Outer anchorages. The outer anchorage (S2) has a one mile radius based on 24°54'20N 54°15'10E. There is also another anchorage centred on 24°46'04N 54°09'03E and a lighterage anchorage at 24°44'06N 54°09'00E (see 7.217).

Pilotage is compulsory for vessels of LOA 60 m or longer, vessels of LOA 40 m or longer carrying hazardous cargo in bulk and passenger vessels of LOA 24 m or longer carrying more than 12 passengers.

Pilots board in position 24°34'32N 54°13'97E.

Pilot boarding position No 2 (24°26'80N 54°14'00E) is designated for vessels with a draught of less than 5 m.

See *ADMIRALTY List of Radio Signals Volume 6(8)*.

3 Restricted areas. Restrictions apply within Bul Syayeef Marine Reserve (24°18'25N 54°21'12E). See 1.69.

Restricted areas, marked by buoys (special), have been established N and S of a causeway (7.247) spanning New Muşaffaḥ Channel. Vessels are only permitted to enter these zones when in the process of transiting the channel through the causeway, following VTS clearance.

4 Speed limit. The maximum permitted speed in the approach channels is 10 kn.

The maximum permitted speed when approaching and passing Hudayriyat Bridge (7.245) is 6 kn.

Regulations concerning entry. The maximum permissible draught in Muşaffaḥ Channel (7.245) is 4.7 m. Subject to approval, a draught of up to 6.2 m may be allowed during an appropriate tidal window. See also 7.245.

Abu Dhabi Ports Notice 04/23

[NP63-No 97-Wk 19/23]

United Arab Emirates - Abu Dhabi - Muşaffaḥ Port — Harbour; development

164

Paragraph 7.247 *Replace by:*

1 General layout. The port is served by two approach channels; Muşaffaḥ Channel (7.245), which is also known as the Old Muşaffaḥ Channel, and the New Muşaffaḥ Channel (7.245).

IV

² **Development.** Works are in progress (2023) on the development of Jazirat Hudayriyat (24°24'·87N 54°21'·90E). A causeway (24°22'·10N 54°27'·69E) spanning New Muşaffaḥ Channel S of Muşaffaḥ Port, has been built to provide access to the island. The causeway is partly composed of a moveable floating bridge.

³ When the floating bridge is moved the resulting channel, with a navigable width of 100 m, allows the passage of vessels with a draught of up to 8 m at specified times. Passage needs to be arranged with Muşaffaḥ VTS. A traffic signalling light system is in operation. The maximum permitted speed during transit is 6 knots.

Abu Dhabi Ports Notice 04/23

[NP63-No 98-Wk 19/23]

United Arab Emirates - Abu Dhabi - Muşaffaḥ Port — Directions

164

Paragraph 7.248 2 lines 1-10 *Replace by:*

² **Approach and entry via New Muşaffaḥ Channel.** From a position NW of Jazirat al Lu'lu', the track leads S, passing clear of Fairway Light Buoy (NM-FWB) (safe water) (24°33'·82N 54°13'·97E) and through New Muşaffaḥ Channel, marked by light buoys (lateral).

Thence from the vicinity of M29 Light Buoy (starboard hand) (24°24'·60N 54°19'·22E), the channel passes SW of Jazirat Hudayriyat and Khawr Qirqishān, and leads SE, S and NNE to meet Muşaffaḥ Channel SW of Muşaffaḥ Industrial Area.

³ **Approach and entry via (Old) Muşaffaḥ Channel.**

From a position in the vicinity of Fairway Light Buoy (NM-FWB) (safe water) the track leads SE, for about 5½ miles, to a position in the vicinity of FWB Light Buoy (safe water) (24°29'·45N 54°17'·97E).

Thence from the track leads S towards the entrance to the Muşaffaḥ Channel (24°28'·56N 54°18'·13E). The channel, marked by light buoys (lateral), leads generally S, for about 1½ miles, thence generally ESE, for about 10 miles, passing beneath Hudayriyat Bridge (7.245).

ENC GB45050B (11.000); ENC GB45050A (18.000)

[NP63-No 99-Wk 19/23]

NP69 East Coast of the United States Pilot Volume 2 (2021 Edition)

Maryland - Chesapeake Bay - Baltimore Harbor - Fort McHenry Channel — Directions; berths; leading lights

156

Paragraph 6.124 including heading *Replace by:*

**Spare
6.124**

US Notice 33/12281/22

[NP69-No 36-Wk 19/23]

UPDATES TO ADMIRALTY LIST OF LIGHTS AND FOG SIGNALS

NP74, Vol A Edition 2023. Weekly Edition No. 19, Dated 11 May 2023.

Last Updates: Weekly Edition No. 18, dated 04 May 2023.

A0735-4	- Haslar Lake. Haslar Marina. Pontoon M. Head	50 47-50 N 1 06-90 W *	2 F G(vert)
A0735-7	- Haslar Lake. Haslar Marina. Pontoon D. Southward	50 47-36 N 1 07-02 W *	2 F G(vert)
A3831-2	- Cullivoe. Breakwater. Head	60 41-86 N 0 59-70 W	Fl(2)WRG 10s	3	4	White metal pole	G080°-294°(214°), W294°-355°(61°), R355°-080°(85°). Sectors unreliable (T) 2023 *
A4986	- Eastham Channel. Pipeline Pontoon. N End	53 20-71 N 2 57-88 W *	2 F G(vert)	Pontoon	..
*	*	*	*	*	*	*	*
A4986-2	- Eastham Channel. Pipeline Pontoon. S End	53 20-68 N 2 57-86 W *	2 F G(vert)	Pontoon	..
*	*	*	*	*	*	*	*

NP76, Vol C Edition 2022. Weekly Edition No. 19, Dated 11 May 2023.

Last Updates: Weekly Edition No. 18, dated 04 May 2023.

C6676-2	- Torsken	58 49-49 N 17 43-76 E	Q WRG	6	W 9 R 6 G 5	White hut, red band	G018-7°-153-9°(135-2°), W153-9°-166-4°(12-5°), R166-4°-248-5°(82-1°), G248-5°-307°(58-5°), W307°-313-1°(6-1°), R313-1°-018-7°(65-6°). Floodlit. TE 2023 *
C7267-5	- Klappervall	56 58-80 N 17 01-11 E	Fl Y 3s	..	5	Wind turbine	Floodlit
*	*	*	Aero F R
*	*	*	*	*	*	*	*

NP77, Vol D Edition 2022. Weekly Edition No. 19, Dated 11 May 2023.

Last Updates: Weekly Edition No. 18, dated 04 May 2023.

D1906 ES, I, 05140	- Cesantes. Wharf. Head	42 17-81 N 8 37-07 W	Fl(3)G 9s	6	3	Green and white tower 7 *	(fl 0-5, ec 1-5) x 2, fl 0-5, ec 4-5
------------------------------	-------------------------	-------------------------	-----------	---	---	---------------------------------	--------------------------------------

NP77, Vol D Edition 2022 continued.

SOUTH COAST. GIBRALTAR BAY. PUERTO DE ALGECIRAS - LA LINEA							
D2436-735 ES, II, 20365	- Campamento. Dock	36 10-32 N 5 22-99 W	Q R	..	3	Red column, white band 1	..
*	*	*	*	*	*	*	*
D9172-45	- RP4N	26 23-50 N 52 17-34 E	Lit	..	15	Platform	..
*	*	*	*	*	*	*	*

NP78, Vol E Edition 2022. Weekly Edition No. 19, Dated 11 May 2023.

Last Updates: Weekly Edition No. 18, dated 04 May 2023.

E2829-5 HR, , 185	- Luka Torpedo. Breakwater. Head	45 20-06 N 14 23-97 E	Fl(2)G 4-5s	5	2	Green column	<i>fl 0-3, ec 1, fl 0-3, ec 2-9</i>
*	*	*	*	*	*	*	*
E2997-2 HR, , 164-2	- Unije. Pličina Arbit	44 36-11 N 14 17-04 E	Fl(2)W 5s	5	2	⊗ on black column, red bands 6	<i>fl 0-5, ec 1, fl 0-5, ec 3</i>
*	*	*	*	*	*	*	*
E2997-3 HR, , 256-7	- Novalja. Floating pier. Head	44 33-30 N 14 52-80 E	Fl Y 2s	5	1	Yellow column	<i>fl 0-5</i>
*	*	*	*	*	*	*	*
WEST OF PULA. ISABELA FIELD							
E7578 HR, , 1813	- Isabela. North	44 58-80 N 13 07-77 E	Lit	Platform	..
*					*		
E7578-5 HR, , 1814	- Isabela. South	44 57-56 N 13 09-12 E	Lit	Platform	..
*					*		
E7581-5 HR, , 1817	- Ivana. A	44 44-72 N 13 17-67 E	Mo(U)W 15s	17	10	Platform	<i>(fl 0-4, ec 0-5) x 2, fl 1-2, ec 12</i>
	---	..	Mo(U)W 15s	13	10	..	<i>(fl 0-4, ec 0-5) x 2, fl 1-2, ec 12</i>
	---	..	Mo(U)R 15s	14	5	..	<i>(fl 0-4, ec 0-5) x 2, fl 1-2, ec 12</i>
	---	..	Mo(U)R 15s	17	5	..	<i>(fl 0-4, ec 0-5) x 2, fl 1-2, ec 12</i>
	---	..	Horn Mo(U) 30s	..	2	..	<i>(bl 0-75, si 1) x 2, bl 2-5, si 24</i>
*	*	*	*	*	*	*	*
E7583 HR, , 1820	- Ivana. B	44 41-25 N 13 12-87 E	Mo(U)W 15s	22	10	Platform	<i>(fl 0-4, ec 0-5) x 2, fl 1-2, ec 12</i>
	---	..	Horn Mo(U) 30s	..	2	..	<i>(bl 0-75, si 1) x 2, bl 2-5, si 24</i>
*				*	*		*

V

NP80, Vol G Edition 2022. Weekly Edition No. 19, Dated 11 May 2023.
Last Updates: Weekly Edition No. 18, dated 04 May 2023.

G4704-1 US, VI, 11573	- Flag Island. B	45 32-94 N 122 20-27 W	Fl Y 4s	9	4 Yellow ◇ on framework tower, on multi-pile structure	..	
	*		*	*	*	*	*

NP82, Vol J Edition 2023. Weekly Edition No. 19, Dated 11 May 2023.
Last Updates: Weekly Edition No. 18, dated 04 May 2023.

J3026-1 US, III, 14905	- Main Channel. Harbor Ldg Lts 025°. Rear. 708m from front	24 35-11 N 81 47-82 W	Iso W 6s	11	.. Red □, white stripe, on pile structure	Vis 4° each side of rangeline	*
J3120	CHARLOTTE HARBOR Remove from list; deleted						
J4181-3 US, IV, 27005	FREEPORT. HARBOR - Ldg Lts 081-5°. Front	28 56-58 N 95 18-11 W	Q R	7	.. Red □, white stripe, on framework tower	Vis 1-5° each side of rangeline	*
J4181-31 US, IV, 27010	- Ldg Lts 081-5°. Rear. 169m from front	28 56-59 N 95 18-01 W	F R	13	.. Red □, white stripe, on framework tower	Vis 1-5° each side of rangeline	*

NP83, Vol K Edition 2023. Weekly Edition No. 19, Dated 11 May 2023.
Last Updates: Weekly Edition No. 18, dated 04 May 2023.

K3120-9	GREAT BARRIER REEF (COASTAL WATERS). HINCHINBROOK ISLAND - Missionary Bay	18 15-20 S 146 11-79 E	Fl Y 3s Yellow × on beacon	Destroyed (T) 2023	*
K3563-4	Remove from list; deleted						
K3563-5	Remove from list; deleted						
K4713-45	VITI LEVU. NORTH-WEST COAST. YASAWA ISLANDS - Vomolailai Island	17 29-09 S 177 14-95 E	Q(3)R 10s	10	7 White concrete tower, red bands	..	*
K4713-6	- Waya Island. Koromasoli Point	17 15-50 S 177 08-41 E	Q G	8	6 White concrete tower, green bands	..	*
K4900-1	- Alite Reef. N End	8 51-77 S 160 36-28 E	Q W	10	4 ⚓ on white column	..	*

V

NP83, Vol K Edition 2023 continued.

K4903	- Auki Harbour. Outer Reef	8 46-84 S 160 41-55 E	Q(2)G 10s *	10	5 White column	<i>fl 0-5, ec 0-5, fl 0-5, ec 8-5</i>
K4906	FLORIDA ISLANDS - Nggela Pile. Indalilau Islet	9 11-63 S 160 21-67 E	Fl(2)W 10s	8	10 White column	<i>fl 0-5, ec 1, fl 0-5, ec 8</i> *

NP84, Vol L Edition 2023. Weekly Edition No. 19, Dated 11 May 2023.
Last Updates: Weekly Edition No. 18, dated 04 May 2023.

L4822 IS, , 295	Thorlákshöfn. Ldg Lts 297°. Front	63 51-87 N 21 22-76 W	Oc R 3s	17	. . △ on post 10	TE 2022 *
L4822-1 IS, , 295-1	Thorlákshöfn. Ldg Lts 297°. Rear. 81m from front	63 51-89 N 21 22-85 W	Oc R 3s	21	. . ▽ on framework tower 15	TE 2022 *
L4823-8 IS, , 296	Porlákshöfn Harbour. Dir Lt 242-8°	63 51-48 N 21 22-34 W	Dir WRG	12	2 Mast 13	Fl G 1-5s 237-8°-239-8°(2°). Oc G 5s 239-8°-241-8°(2°). Oc W 5s 241-8°-243-8°(2°). Oc R 5s 243-8°-245-8°(2°). Fl R 1-5s 245-8°-247-8°(2°). TE 2022 *

NP85, Vol M Edition 2022. Weekly Edition No. 19, Dated 11 May 2023.
Last Updates: Weekly Edition No. 18, dated 04 May 2023.

M8044 RU, 2401, 2535	- Severo-Kuril'sk. Mys Opornyy. Ldg Lts 194-6°. Front	50 40-65 N 156 08-59 E	F R	43	10 White 8-sided concrete tower, red and white front 8	Vis 10° each side of leading line
	----- Reserve light	..	F R *	..	5 .. *	Vis 10° each side of leading line *
M8044-1 RU, 2401, 2536	- Severo-Kuril'sk. Mys Opornyy. Ldg Lts 194-6°. Rear. 224m from front	50 40-52 N 156 08-54 E	F R	77	10 White 8-sided concrete tower, red stripe 8	Vis 10° each side of leading line
	----- Reserve light	..	F R *	..	5 .. *	Vis 10° each side of leading line *
M8049-3 RU, 2401, 2496	- Mys Otvesnyy	47 09-05 N 152 17-46 E	Fl W 5s	66	6 Red round metal tower with platform 8	<i>fl 1.</i> W114°-006°(252°). TE 2022 *

NP86, Vol N Edition 2022. Weekly Edition No. 19, Dated 11 May 2023.
Last Updates: Weekly Edition No. 17, dated 27 April 2023.

N6176-5 PORT OF ALEXANDRIA (MĪNĀ' AL ISKANDARĪYAH)
 Remove from list; deleted

N6186-5 PORT OF ALEXANDRIA (MĪNĀ' AL ISKANDARĪYAH)
 Remove from list; deleted

NP87, Vol P Edition 2022. Weekly Edition No. 19, Dated 11 May 2023.
Last Updates: Weekly Edition No. 17, dated 27 April 2023.

P3799-518	- Hongyang Pier	34 37-97 N 119 37-98 E	Iso G 2s	10	4 Green and white post 6	..	
CN, G102, 2041-675							
*	*	*	*	*	*	*	*
P3881-9	- Sanqi Hangdao. Ldg Lts 277°57'. Front	37 34-99 N 121 22-31 E	F R	38	4 Black ▽ on white metal column, red bands 34	..	
CN, G101, 1496-51							
*	----	..	AIS	*	MMSI No 994121118
*	*	*	*	*	*	*	*
P3881-91	- Sanqi Hangdao. Ldg Lts 277°57'. Rear	37 35-00 N 121 22-19 E	F R	43	4 Black △ on white metal column, red bands 39	..	
CN, G101, 1496-52							
*	----	..	AIS	*	MMSI No 994121119
*	*	*	*	*	*	*	*
P3906-955	BOHAI WAN. HUANGHUA GANG Remove from list; deleted						
P3906-957	BOHAI WAN. HUANGHUA GANG Remove from list; deleted						
P3906-959	BOHAI WAN. HUANGHUA GANG Remove from list; deleted						
P3906-961	BOHAI WAN. HUANGHUA GANG Remove from list; deleted						
P3906-963	BOHAI WAN. HUANGHUA GANG Remove from list; deleted						
P3906-965	BOHAI WAN. HUANGHUA GANG Remove from list; deleted						
P3906-967	BOHAI WAN. HUANGHUA GANG Remove from list; deleted						
P3906-9732	- Pilot Base. No 1	38 21-42 N 117 50-98 E	Mo(C)Y 15s	5	4 Pile beacon, red and white bands 3	..	
CN, G101, 1380-537							
*	*	*	*	*	*	*	*
P3906-9733	- Pilot Base. No 2	38 21-34 N 117 51-07 E	Mo(C)Y 15s	5	4 Pile beacon, red and white bands 3	..	
CN, G101, 1380-538							
*	*	*	*	*	*	*	*

NP88, Vol Q Edition 2023. Weekly Edition No. 19, Dated 11 May 2023.
Last Updates: Weekly Edition No. 18, dated 04 May 2023.

PULAU BANGKA. EASTWARD									
Q1005-6	Remove from list; deleted								
Q1692-352	-	20 39-90 S 115 35-80 E	Q W
*	*	*	*	*	*	*	*	*	*
Q1692-353	- Abutilon Island. N Side	20 39-77 S 115 35-00 E	Fl R 3s
*	*	*	*	*	*	*	*	*	*
Q1692-355	- Varanus Island. SE End	20 39-69 S 115 34-99 E	Fl G 3s
*	*	*	*	*	*	*	*	*	*
Q1692-358	- Varanus Island. E Side	20 39-35 S 115 34-97 E	Fl Y 5s	Yellow x on yellow beacon
*	*	*	*	*	*	*	*	*	*
Q1692-3801	- N of Varanus Island. Dir Lt 266°	20 38-04 S 115 34-34 E	Fl W 3s	Flagstaff
			*						
Q1692-585	-	20 49-09 S 115 32-94 E	Mo(U)Y 15s	..	3	Yellow beacon
									*
Q1776-68	- Jervoise Bay. Entrance Channel. Detached Breakwater	32 09-50 S 115 45-55 E	Fl Y 3s
*	*	*	*	*	*	*	*	*	*
Q1776-72	- Jervoise Bay. Entrance Channel. Detached Breakwater	32 09-26 S 115 45-60 E	Fl Y 3s
*	*	*	*	*	*	*	*	*	*
Q3324	- Emery Point	12 27-23 S 130 48-93 E	Fl(3)WR 15s	18	W19	White metal R14 framework tower 9	(fl 1, ec 2) x 2, fl 1, ec 8. W335°-139°(164°), R139°-181°(42°)
									*

VI

ONGOING MAINTENANCE PROCESS IN ADMIRALTY RADIO SIGNALS VOLUMES

In order to guarantee the safety of Mariners at sea, avoid any unsafe and unnecessary duplication/updating of information appearing in different paper and digital ADMIRALTY Radio Signals Volumes, the information will now be centralised into the most relevant ADMIRALTY Radio Signals Volume.

For more information, a reference to the location of any required information will also be added to each ADMIRALTY Radio Signals Volume.

UPDATES TO ADMIRALTY LIST OF RADIO SIGNALS

Weekly Edition No. 19 dated 11 May 2023

The **ADMIRALTY List of Radio Signals diagrams** included in the paper version of the weekly Notice to Mariners (Section VI) are printed in black and white. If required, a colour version of these diagrams can be downloaded from www.admiralty.co.uk/maritime-safety-information. To obtain the colour versions select **View and download NMs** – select **Weekly** – select **Year** – select **Week** – go to **Selected Week Content** – select **File** (for example: NP286(3)–WK01–14–PAGE149_Week01_2023.pdf)

VOLUME 1, NP281(2), Third Edition, 2022

Published Wk 47/22

(Last Updates: Weekly Edition No. 18 dated 04 May 2023)

MARITIME RADIO STATIONS

PAGES 354 and 355, RUSSIA (Pacific Coast).

VLADIVOSTOK MRCC.

Delete entry and replace by:

VLADIVOSTOK MRCC					
Control Centre: 43°07'00N 131°53'00E		MMSI 002734412	DSC VHF MF		Diagram page 352
Telephone: +7 4232 495895 +7 4232 495522 +7 4232 497401			Fax: +7 4232 227782		
Call: Vladivostok Radio RCC Inmarsat C: 427312137=MAPV X Telex: +64 213115 MRF RU			Email: vldvmrcc@pma.ru		

VHF

Nakhodka	42°49'00N 132°52'98E	Ch 16 69	H24
Tumannaya (Posiet)	42°34'66N 131°11'26E	Ch 09 14 16	

RT (MF)

	Position	Transmits	Receives	Hours of Watch
		2182	2182	H24

UKHO (RSDRA2023000105793) 19/23

VI

VOLUME 2, NP282(1), Fourth Edition, 2023

Published Wk 12/23
(Last Updates: Weekly Edition No. 17 dated 27 April 2023)

AUTOMATIC IDENTIFICATION SYSTEM (AIS)

PAGE 134, below MOZAMBIQUE.

Insert:

NAMIBIA (659)					
Walvis Bay Entrance Channel No 5	22°51'·24S 14°29'·52E			Virtual	
Walvis Bay Entrance Channel No 6	22°51'·17S 14°29'·66E			Virtual	
Walvis Bay Entrance Channel No 7	22°51'·67S 14°29'·78E			Virtual	
Walvis Bay Entrance Channel No 8	22°51'·60S 14°29'·92E			Virtual	

South African Notice 3/51/23 (RSDRA2023000100753) 19/23

PAGE 160, SPAIN (Mediterranean Coast), below Puerto de Valencia Dique del Norte Lt.

Insert:

Puerto de Valencia East Cardinal Lt Buoy	39°25'·22N 0°18'·22W	992241197		Real	
Puerto de Valencia Lt Buoy	39°25'·58N 0°18'·19W	992241198		Real	

Spanish Notice 14/117/23 (RSDRA2023000095630) 19/23

PAGE 170, SPAIN (South West Coast), below Río Guadalquivir Punta de los Cepillos Sur Lt Buoy No 9.

Insert:

Río Guadalquivir Puntalete Norte Roja Lt Buoy No 12	36°54'·42N 6°17'·73W	992241213		Real	
Río Guadalquivir Puntalete Roja Lt Buoy No 10	36°54'·32N 6°18'·24W	992241212		Real	
Río Guadalquivir San Isidoro Lt Buoy No 6	36°52'·16N 6°21'·18W	992241208		Real	

Spanish Bulletin 15/23 (RSDRA2023000103916) 19/23

VI

VOLUME 2, NP282(2), Fourth Edition, 2023

Published Wk 12/23

(Last Updates: Weekly Edition No. 18 dated 04 May 2023)

RADAR BEACONS

PAGE 48, KOREA, SOUTH, below 82950 Donghae Hang North Breakwater Lt.

Insert:

Aninhwaryeok South Breakwater Lt	37°44'·61N 128°59'·99E	3 & 10		5		K		82953
----------------------------------	------------------------	--------	--	---	--	---	--	-------

Korean Notice 15/249/23 (RSDRA2023000103862) 19/23

PAGE 48, JAPAN.

83350 Suo Nada Lt Buoy No 4.

Delete entry and replace by:

Shimonoseki SE Suido Lt Buoy No 4	33°51'·61N 131°11'·82E	3	360°	5		K		83350
-----------------------------------	------------------------	---	------	---	--	---	--	-------

Japan Coast Guard Publication 411 List of Aids to Navigation Vol.1 Edition 2022 (RSDRA2022000230902) 19/23

PAGE 48, JAPAN.

83490 Kurushima Kaikyo Lt Buoy No 9.

Delete entry and replace by:

Kurushima Kaikyo Lt Buoy No 9	34°05'·88N 133°02'·17E	3	360°	5		G		83490
-------------------------------	------------------------	---	------	---	--	---	--	-------

Japan Coast Guard Publication 411 List of Aids to Navigation Vol.1 Edition 2022 (RSDRA2022000230902) 19/23

PAGE 48, JAPAN.

83570 Habushi Iwa Lt.

Delete entry and replace by:

Habushi Iwa Lt	34°20'·70N 133°42'·79E	3	360°	5		O		83570
----------------	------------------------	---	------	---	--	---	--	-------

Japan Coast Guard Publication 411 List of Aids to Navigation Vol.1 Edition 2022 (RSDRA2022000230902) 19/23

PAGE 48, JAPAN.

83630 Harima Nada Lt Buoy No 4.

Delete entry and replace by:

Harima Nada Koro Lt Buoy No 4	34°30'·13N 134°38'·74E	3	360°	5		K		83630
-------------------------------	------------------------	---	------	---	--	---	--	-------

Japan Coast Guard Publication 411 List of Aids to Navigation Vol.1 Edition 2022 (RSDRA2022000230902) 19/23

PAGE 48, JAPAN.

83640 Akashi Kaikyo Koro West Lt Buoy.

Delete entry and replace by:

Akashi Kaikyo Traffic Route West Lt Buoy	34°36'·48N 134°56'·73E	3	360°	5		O		83640
--	------------------------	---	------	---	--	---	--	-------

Japan Coast Guard Publication 411 List of Aids to Navigation Vol.1 Edition 2022 (RSDRA2022000230902) 19/23

PAGE 48, JAPAN.

83650 Akashi Kaikyo Koro East Lt Buoy.

Delete entry and replace by:

Akashi Kaikyo Traffic Route East Lt Buoy	34°34'·98N 135°04'·92E	3	360°	5		M		83650
--	------------------------	---	------	---	--	---	--	-------

Japan Coast Guard Publication 411 List of Aids to Navigation Vol.1 Edition 2022 (RSDRA2022000230902) 19/23

VI

PAGE 48, JAPAN.
83720 O-Naruto Bridge.
 Delete entry and replace by:

Onaruto Bridge	34°14'40N 134°39'28E	3	360°	16		Q		83720
----------------	----------------------	---	------	----	--	---	--	-------

Japan Coast Guard Publication 411 List of Aids to Navigation Vol.1 Edition 2022 (RSDRA2022000230902) 19/23

PAGE 48, JAPAN.
83930 Kado Ishi Lt.
 Delete entry and replace by:

Kado Ishi Lt Bn	34°42'29N 136°59'27E	3	360°	5		K		83930
-----------------	----------------------	---	------	---	--	---	--	-------

Japan Coast Guard Publication 411 List of Aids to Navigation Vol.1 Edition 2022 (RSDRA2022000230902) 19/23

PAGE 48, JAPAN.
84120 Uraga Suido Traffic Route Lt Buoy No 6.
 Delete entry and replace by:

Uraga Suido Traffic Route Centre Lt Buoy No 6	35°19'77N 139°42'82E	3	360°	5		M		84120
---	----------------------	---	------	---	--	---	--	-------

Japan Coast Guard Publication 411 List of Aids to Navigation Vol.1 Edition 2022 (RSDRA2022000230902) 19/23

PAGE 48, JAPAN.
84130 Tokyo Wan Naka-no-Se D LANBY.
 Delete entry and replace by:

Tokyo Wan Nakanose Lt Bn D	35°24'89N 139°45'32E	3	360°	5		G		84130
----------------------------	----------------------	---	------	---	--	---	--	-------

Japan Coast Guard Publication 411 List of Aids to Navigation Vol.1 Edition 2022 (RSDRA2022000230902) 19/23

PAGE 48, JAPAN.
84160 Tokyo Wan, Odan Doro, P7 Bridge Pile NE.
 Delete entry and replace by:

Tokyo Wan Aqua-Line Bridge P7 Pier NE	35°27'33N 139°53'25E	3		5		Q		84160
---------------------------------------	----------------------	---	--	---	--	---	--	-------

Japan Coast Guard Publication 411 List of Aids to Navigation Vol.1 Edition 2022 (RSDRA2022000230902) 19/23

PAGE 48, JAPAN.
84170 Tokyo Wan, Odan Doro, P7 Bridge Pile SW.
 Delete entry and replace by:

Tokyo Wan Aqua-Line Bridge P7 Pier SW	35°27'33N 139°53'24E	3		5		7		84170
---------------------------------------	----------------------	---	--	---	--	---	--	-------

Japan Coast Guard Publication 411 List of Aids to Navigation Vol.1 Edition 2022 (RSDRA2022000230902) 19/23

PAGE 50, JAPAN.
84960 Kanmon Passage 2, Lt Buoy No 10.
 Delete entry and replace by:

Kanmon Passage Lt Buoy No 10	33°56'41N 130°51'62E	3	360°	5		G		84960
------------------------------	----------------------	---	------	---	--	---	--	-------

Japan Coast Guard Publication 411 List of Aids to Navigation Vol.1 Edition 2022 (RSDRA2022000230902) 19/23

PAGE 74, UNITED STATES (Atlantic Coast).
97130 Kill Van Kull Channel Junction Lt Buoy KV.
 Delete entry

United States Coast Guard Bulletin 16/23 (RSDRA2023000105721) 19/23

VI

PAGE 76, UNITED STATES (Great Lakes), below 97543-5 Nordmeer Wreck Lt Buoy WR1.

Insert:

Poe Reef Lt	45°41'69N 84°21'73W	3				Z		97544
White Shoal Lt	45°50'50N 85°08'14W	3				K		97544-5
Note: Marks east side of shoal								

United States Coast Guard Bulletin 16/23 (RSDRA2023000105721) 19/23

AUTOMATIC IDENTIFICATION SYSTEM (AIS)

PAGE 120, CHILE, below Faro Limar Lt.

Insert:

Fibre Optic Cable North No.1	33°31'45S 71°42'11W	997256092	Broadcasts every 3 minutes	Virtual	
Fibre Optic Cable North No.2	33°30'85S 71°47'22W	997256091	Broadcasts every 3 minutes	Virtual	
Fibre Optic Cable North No.3	33°29'61S 71°52'06W	997256090	Broadcasts every 3 minutes	Virtual	
Fibre Optic Cable South No.1	33°32'85S 71°41'95W	997256095	Broadcasts every 3 minutes	Virtual	
Fibre Optic Cable South No.2	33°33'57S 71°47'00W	997256094	Broadcasts every 3 minutes	Virtual	
Fibre Optic Cable South No.3	33°34'74S 71°51'98W	997256093	Broadcasts every 3 minutes	Virtual	

Chilean Bulletin 4/23 (RSDRA2023000097449) 19/23

PAGE 238, JAPAN.

Akashi Kaikyo Traffic Route Center Lt Buoy No 2.

Delete entry and replace by:

Akashi Kaikyo Traffic Route Centre Lt Buoy No 2	34°37'41N 135°00'54E	994311202		Real	
---	----------------------	-----------	--	------	--

(former update 16/23)

Japan Coast Guard Publication 411 List of Aids to Navigation Vol.1 Edition 2022 (RSDRA2022000230902) 19/23

PAGE 238, JAPAN.

Ichiesaki Lt Buoy.

Delete entry and replace by:

Ichiesaki SW Floating Fish Reef Facility Lt Buoy	33°26'27N 135°18'32E	994311561		Real	
--	----------------------	-----------	--	------	--

(former update 16/23)

Japan Coast Guard Publication 411 List of Aids to Navigation Vol.1 Edition 2022 (RSDRA2022000230902) 19/23

PAGE 238, JAPAN.

Iragu Suido Traffic Route.

Delete entry and replace by:

Iragu Suido Traffic Route North Exit East End	34°34'82N 136°59'40E	994316151		Virtual	
---	----------------------	-----------	--	---------	--

Japan Coast Guard Publication 411 List of Aids to Navigation Vol.1 Edition 2022 (RSDRA2022000230902) 19/23

PAGE 238, JAPAN.

Kantorisaki Superbuoy.

Delete entry and replace by:

Kantorisaki SE Floating Fish Reef Facility Lt Buoy	33°30'67N 136°05'72E	994311566		Real	
--	----------------------	-----------	--	------	--

Japan Coast Guard Publication 411 List of Aids to Navigation Vol.1 Edition 2022 (RSDRA2022000230902) 19/23

VI

PAGE 238, JAPAN.
Kashinosaki Superbuoy.
 Delete entry and replace by:

Kashinosaki Eastern Floating Fish Reef Facility Lt Buoy	33°27'·93N 135°57'·58E	994311568		Real	
---	------------------------	-----------	--	------	--

Japan Coast Guard Publication 411 List of Aids to Navigation Vol.1 Edition 2022 (RSDRA2022000230902) 19/23

PAGE 238, JAPAN.
Migusasaki Lt Buoy.
 Delete entry and replace by:

Migusasaki SW Floating Fish Reef Facility Lt Buoy	33°27'·47N 135°07'·73E	994311560		Real	
---	------------------------	-----------	--	------	--

Japan Coast Guard Publication 411 List of Aids to Navigation Vol.1 Edition 2022 (RSDRA2022000230902) 19/23

PAGE 238, JAPAN.
Nakayama Lt Bn No 1.
 Delete entry and replace by:

Nakayama Suido Lt Bn No 1	34°37'·71N 136°58'·65E	994311554		Real	
---------------------------	------------------------	-----------	--	------	--

Japan Coast Guard Publication 411 List of Aids to Navigation Vol.1 Edition 2022 (RSDRA2022000230902) 19/23

PAGE 238, JAPAN.
Setosaki Lt Buoy.
 Delete entry and replace by:

Setosaki Southwest Floating Fish Reef Facility Lt Buoy	33°30'·27N 135°05'·28E	994311559		Real	
--	------------------------	-----------	--	------	--

Japan Coast Guard Publication 411 List of Aids to Navigation Vol.1 Edition 2022 (RSDRA2022000230902) 19/23

PAGE 240, JAPAN.
Uraga Suido Traffic Route Lt Buoy No 1.
 Delete entry and replace by:

Uraga Suido Traffic Route Centre Lt Buoy No 1	35°12'·72N 139°46'·60E	994311101		Real	
---	------------------------	-----------	--	------	--

Japan Coast Guard Publication 411 List of Aids to Navigation Vol.1 Edition 2022 (RSDRA2022000230902) 19/23

PAGE 280, TAIWAN, below Taipei Kang Lt Buoy No SB8.
 Insert:

Taipei Kang No P2	25°09'·58N 121°20'·76E			Virtual	
Taipei Kang No P4	25°09'·33N 121°20'·89E			Virtual	

UKHO (RSDRA2023000101372) 19/23

VI

PAGE 282, TAIWAN, below Taipei Kang Spar Lt Buoy No SB10.

Insert:

Taipei Kang TSS NW End No 2	25°14'·80N 121°16'·33E			Virtual	
Taipei Kang TSS NW End No 3	25°14'·25N 121°15'·18E			Virtual	
Taipei Kang TSS SE End No 1	25°10'·62N 121°20'·22E			Virtual	
Taipei Kang TSS SE End No 4	25°10'·08N 121°19'·00E			Virtual	

UKHO (RSDRA2023000101366) 19/23

PAGE 292, UNITED STATES (Atlantic Coast), below Key West Main Channel Lt Buoy No 23.

Insert:

Kill Van Kull Channel Junction Lt Buoy KV	40°39'·04N 74°03'·85W	993676008		Real	
---	-----------------------	-----------	--	------	--

United States Coast Guard Bulletin 16/23 (RSDRA2023000105721) 19/23

VI

VOLUME 3, NP283(1), Third Edition, 2022

Published Wk 48/22

(Last Updates: Weekly Edition No. 17 dated 27 April 2023)

RADIO WEATHER SERVICES AND NAVIGATIONAL WARNINGS

PAGE 222, SWEDEN. FIRING PRACTICE AREAS.

Delete entry and replace by:

FIRING PRACTICE AREAS

Kattegat

For firing information Tel: +46 (0) 352663953.

Northern Baltic Sea

Warnings are not announced daily to merchant vessels, extraordinary gunnery exercises will however be announced in Notice to Mariners and/or on Swedish National Radio, with requests to avoid the area of interest.

For firing information call "Naval Control Musko" on: VHF Ch 16, Tel: +46(0) 108231823 or e-mail: Marinb-SjoCMusko@mil.se.

Southern Baltic Sea

Warnings are not announced daily to merchant vessels. Gunnery exercises are announced daily on a telephone answering machine in Swedish: Tel: +46(0) 45510000.

For firing information call "Naval Control Göteborg" on: VHF Ch 16, Tel: +46(0) 31692805, or e-mail: Marinb-SjoCGoteborg@mil.se.

Safety Offices

Information during firings is available from Safety Offices for the following areas:

Area Name	Call / VHF Ch	Telephone number	Position
Junkön (R46)		+46(0) 705473515 +46(0) 703162072	65°25'00N 22°20'00E
Kabusa (R55A)	CALL: Kabusa skjutfält / Ch 16 or Ch 68	+46(0) 411550652	55°25'00N 14°00'00E
Ravlunda (R34)	CALL: Ravlunda skjutfält / Ch 16 or Ch 68	+46(0) 734222490 +46(0) 44351032 +46(0) 44351096	55°45'98N 14°11'30E
Ringenäs (R41A)		+46(0) 352663955 +46(0) 3553677	56°41'00N 12°41'00E
Rinkaby (R38A)	CALL: Rinkaby skjutfält / Ch 16 or Ch 18	+46(0) 44242502	55°56'78N 14°19'59E
Såtenäs		+46(0) 510477000	58°28'00N 12°43'00E
Tåme (R58)	CALL: Tåme skjutfält / Ch 16	+46(0) 921348405* +46(0) 921349100	64°59'20N 21°20'50E
Tofta (R28A, R28B and R28C)	CALL: Tofta skjutfält / Ch 16 or Ch 69	+46(0) 108295717	57°33'50N 18°08'00E
Utö	CALL: Utö skjutfält / Ch 16	+46(0) 850157550* +46(0) 850157045	58°56'97N 18°15'75E
Väddö (R15A)	CALL: Väddö skjutfält / Ch 16	+46(0) 108236580* +46(0) 108236582	59°58'00N 18°54'00E
Veckholm Firing Danger Area (Stockholm)		+46(0) 171157680	59°30'00N 17°26'50E

* When firing is NOT in progress, this number connects to a recorded answering service giving information about current and forthcoming practices, H24 in Swedish only.

Swedish Notice 956/17457/23 (RSDRA2023000087007) 19/23

VI

VOLUME 5, NP285, Third Edition, 2022

Published Wk 32/22

(Last Updates: Weekly Edition No. 17 dated 27 April 2023)

MARITIME SAFETY INFORMATION (MSI) UNDER THE GMDSS

PAGES 190 and 191, NAVAREA IV (United States).

Delete entry and replace by:

NAVAREA IV (United States)

Maritime Watch
National Geospatial-Intelligence Agency
MAIL STOP N65-SH
7500 GEOINT Drive
Springfield, VA 22150-7500
United States of America

Telephone: +1 571 557 5455
+1 571 557 6746

Fax: +1 571 558 3261

email: navsafety@nga.mil

Website: https://www.nga.mil/resources/Maritime_Safety_Products_and_Services.html

Warning Url: <http://msi.nga.mil/NGAPortal/MSI.portal> (Select Broadcast Warnings)

National Coordinators within the United States

COUNTRY	TELEPHONE	FACSIMILE	EMAIL/OTHER
US Coast Guard Communication Command			Joseph.R.Conroy@uscg.mil
Coast Guard District 1	+1 617 223 8555	+1 617 223 8117	d01-smb-d1cmdcenter@uscg.mil
Coast Guard District 5	+1 757 398 6231	+1 757 398 6392	d05-smb-d5cg@uscg.mil
Coast Guard District 7	+1 305 415 6800	+1 305 415 6809	d07-smb-cmdcenter@uscg.mil
Coast Guard District 8	+1 504 589 6225	+1 504 589 2148	d08-comandcenter@uscg.mil
Coast Guard District 11	+1 510 437 3701	+1 510 437 3017	rocalameda@uscg.mil
Coast Guard District 13	+1 206 220 7001	+1 206 220 7009	d13cc@uscg.mil
Coast Guard District 14	+1 808 535 3333	+1 808 535 3338	jrcchonolulu@uscg.mil
Coast Guard District 17	+1 907 463 2000	+1 907 463 2023	jrcjuneau@uscg.mil
International Ice Patrol	+1 860 271 2626	+1 860 271 2773	iipcoms@uscg.mil
US Coast Guard Headquarters	+1 202 475 3537		Patrick.J.Gallagher@uscg.mil

National Coordinators

COUNTRY	TELEPHONE	FACSIMILE	EMAIL/OTHER
Anguilla	+1 264 497 2651		rawle.hazell@gov.ai
Antigua & Barbuda	+1 268 462 1273	+1 268 462 2510	dlake@abregistry.ag
Aruba	+599 9 463 7738		N.silvacostada@midef.nl
Barbados	+1 246 434 6100		kfergusson@barbadosport.com
Belize	+501 223 0717		mmcord@portauthority.bz
Bermuda	+1 441 2971010		sjpegg@gov.bm
Bonaire			N.silvacostada@midef.nl
British Virgin Islands	+1 284 468 2902		rfrett@gov.vg
Canada NAVAREA XVII/XVIII Coordinator	+1 343 548 1868		Valerie.marquette@dfo-mpo.ca
Canada MCTS Iqaluit	+1 867 979 5724	+1 867 979 4264	iqanordreg@innav.gc.ca www.marinfo.gc.ca/e-nav

Continued on next page

VI

Canada JRCC Halifax	+1 902 427 8200	+1 902 427 2114	jrcchalifax@sarnet.dnd.ca www.marinfo.gc.ca/e-nav
Canada MCTS Prescott	+1 613 925 4471	+1 613 925 4519	navarea17.18@innav.gc.ca www.marinfo.gc.ca/e-nav
Cayman Islands	+1 345 244 6608		Darren.kelly@gov.ky
Colombia	+57 5 6694465 ext 5142 +57 5 6694465 ext 5121		jortizbuitrago@dimar.mil.co
Costa Rica			Carol.villalta@mopt.go.cr
Cuba			hg@unicom.co.cu
Curacao Dutch Caribbean Coast Guard	+599 9 463 7738		N.silvacostada@midef.nl
Dominica	+1 767 225 6995		metoffice@cwdom.dm
Dominican Republic	+1 809 593 5900		primitive.lopez@live.com
Ecuador			inocar@inocar.mil.ec
El Salvador	+503 259 35497		jesus.villalta@cnr.gob.sv
French Antilles - also Martinique/Guadeloup/St Barthelemy/St Martin Coastal Area (C)	+596 596 395087 +596 596 395720 +596 696 284082 (Mobile)		emia-antilles-centops-joc.permanence-ops.fct@intradef.gouv.fr emia-antilles.ccmoh24.fct@def.gouv.fr
French Guiana Coastal Area (A)	+594 594 395669 +594 694 268805 (Mobile)	+594 594 395720	info-nautique.charge-com.fct@def.gouv.fr https://www.guayne.gouv.fr/Politiques-publiques/Securite-et-protection-de-la-population/Securite-nautique
Greenland Aasiaat Radio	+299 130000 +299 386993		oyr@telepost.gl
Greenland JRCC Greenland	+299 364010 +299 364000		jrcc@jrcc.gl
Grenada	+1 473 440 3013 +1 473 440 7678	+1 473 440 3418	grenport@spiceisle.com
Guatemala	+502 4497 5254	+502 2334 4775	hidrografia@dgam.gob.gt
Guyana	+592 653 2129 +592 226 0860		tclarke@marad.gov.gy surveys@marad.gov.gy
Haiti	+509 2816 1630		frenoldcheristin@gmail.com
Honduras			Javierd_hn@yahoo.com
Jamaica	+1 876 379 7169	+1 876 922 5765	htomlinson@jamaicaships.com
Mexico	+52 55 56246500 ext 7230	+52 55 56246500	depto.ayudas.nav@gmail.com
Nicaragua	+505 2222 3738		leinael.0983@gmail.com
Panama	+507 6324 2549		Kiaranis.sanchez@amp.gob.pa
Puerto Rico	+1 787 729 6800		ssjcc@uscg.mil
Saba	+599 9 463 7738		N.silvacostada@midef.nl
Saint Lucia	+1 758 457 6152		christopher.alexander@slapsa.com
Saint-Pierre-et-Miquelon	+508 411530 +508 551616	+508 414834	uam.samp.dtam-975@equipement-agriculture.gouv.fr http://www.saint-pierre-et-miquelon.developpement-durable.gouv.fr/avis-aux-navigateurs-avurnav-avinav-r107.html
Saint Vincent & The Grenadines	+1 784 465 5451	+1 784 451 2245	svgmarad@gmail.com
Sint Maarten	+599 9 463 7738		N.silvacostada@midef.nl
St. Eustatius	+599 9 463 7738		N.silvacostada@midef.nl

Continued on next page

VI

Suriname			ossed@mas.sr
Trinidad & Tobago			solmso@gov.tt
Turks and Caicos			vtwilliams@gov.tt

(former update 43/22)

IHO WWNWS14 NAVAREA IV and XII Self Assessment and French publicaition 924 (RSDRA2023000095568 & RSDRA2023000008113) 19/23

DISTRESS, SEARCH AND RESCUE

PAGE 380, NAVAREA IX.

DJIBOUTI.

Delete entry and replace by:

DJIBOUTI

See diagram R11

National SAR Agency: Unknown			
Djibouti (J2A) maintains a continuous listening watch on VHF Ch 16 for distress calls.			
	Telephone	Fax	Others/Ship Earth Stations (SES)
CCCOM (Maritime Operations Coordination and Control Centre)	+253 21355721	+253 21353076	email: djnavy.opsoff@gmail.com
Djibouti Coast Guard	+23 1500 +253 21358033	+253 21341908	
RSC DJIBOUTI (Cospas-Sarsat SPOC)	+253 21340350 +253 21340977	+253 21340723	AFTN: HDAMYDYD Telex: +979 5889
DJIBOUTI (J2A)	+253 21351501 +253 21350489 +253 21350498	+253 21355900	email: djiboutiradio@intnet.dj

French Bulletin 11/23 (RSDRA2023000074685) 19/23

VOLUME 6, NP286(1), Third Edition, 2022

Published Wk 20/22

(Last Updates: Weekly Edition No. 17 dated 27 April 2023)

PAGES 199 & 201 to 202, SHIP REPORTING SYSTEMS, UNITED KINGDOM AND FRANCE - DOVER STRAIT (CALDOVREP).

Delete entry and replace by:

UNITED KINGDOM AND FRANCE - DOVER STRAIT (CALDOVREP) 50°51'N 1°27'E

See ADMIRALTY Chart 5500 and diagram DOVER STRAIT/PAS-DE-CALAIS REPORTING SYSTEM - CALDOVREP.

Reporting System (CALDOVREP)**AREA:**

The Reporting System covers a 65 n mile stretch of the Dover Strait/Pas-de-Calais and is bounded by a line drawn from North Foreland to the border between France and Belgium, and by a line drawn from the Royal Sovereign Tower, through the Bassurelle Lt buoy (50°32'·80N 00°57'·80E) to the coast of France.

DESCRIPTION:

- (1) CALDOVREP is a **Mandatory Reporting System under SOLAS Regulation V/11**.
 (2) Shore based facilities at Gris-Nez Traffic (France) and Channel VTS (UK) are able to monitor shipping movements and provide improved advice and information about navigational hazards and weather conditions.

CONTACT DETAILS:**Northeastbound vessels**

Call: Gris-Nez Traffic
 VHF Channel: Ch 13

Southwestbound vessels

Call: Channel VTS
 VHF Channel: Ch 11

HOURS: H24**PROCEDURE:**

- (1) All vessels of 300 gt and over are required to participate in the Reporting System.
 (2) Vessels of less than 300 gt should report to the CALDOVREP reporting system in circumstances where they:
 (a) Are not under command or at anchor in the TSS or its ITZs
 (b) Are restricted in their ability to manoeuvre
 (c) Have defective navigational aids
 (3) **Northeastbound traffic should report to Gris-Nez Traffic** 2 n miles prior to crossing the southerly reporting line.
 (4) **Southwestbound traffic should report to Channel VTS** when within VHF range of North Foreland and not later than when crossing the northerly reporting line.
 (5) Reports to the nearest of the two shore stations should be made on departure from a port within the ITZs of the TSS.
 (6) Special reporting arrangements can be made on a ship-by-ship basis, subject to approval of both Gris-Nez Traffic and Channel VTS.
 (7) Reports should be made using VHF voice transmissions. However, when reporting to Channel VTS, vessels may fulfil the reporting requirements of CALDOVREP through the use of AIS.

continued on next column

(8) The report from a vessel to the Reporting System should contain only information which is essential to achieve the objectives of the System, i.e.:

ID	Information Required
A	Vessel's name, call sign, IMO identification or MMSI number for transponder reports
B	Date and time
C or D	Position in lat/long or true bearing and distance from a clearly identified landmark
E	True course
F	Speed
G	Port of departure
I	Port of destination and ETA
O	Draught
P	Cargo and, if dangerous goods on board, IMO quantity and class
Q or R	Defect, damage and/or deficiencies affecting the structure, cargo or equipment of the ship or any other circumstances affecting normal navigation in accordance with the SOLAS and MARPOL Conventions
T	Address for provision of information concerning a cargo of dangerous goods
W	Number of persons on board
X	Miscellaneous: (1) Estimated quantity of bunker fuel and characteristics for vessels carrying over 5000 tonnes bunker fuel (2) Navigation conditions

(9) Vessels having defects affecting operational safety, in addition to reporting such defects through the CALDOVREP system, should take appropriate measures to overcome those defects before entering the Dover Strait.

INFORMATION:

(1) Both Gris-Nez and Dover monitor shipping in the TSS in the Dover Strait/Pas-de-Calais using radar and each provides regular information about weather and navigational hazards as part of the joint Channel Navigation Information Service (CNIS). Information is broadcast at the following times and on the following frequencies:

Station	VHF Channel	Times	Additional broadcasts in times of poor visibility
Gris-Nez Traffic	79	H+10	H+25
Channel VTS	11	H+40	H+55

(2) Information broadcasts from both stations will end with a reminder regarding the time of the next broadcast and the VHF frequency on which it will be made.

(3) All vessels navigating in the English Channel and the Dover Strait are recommended to make use of the information broadcasts made by the information services operated by the Governments of the United Kingdom and France, and to keep watch on VHF as appropriate, as set out in the CALDOVREP system.

NOTE:

Vessels using CALDOVREP are tracked by radar and AIS, as are those contravening the Regulations for Prevention of Collisions at Sea 1972 (as amended), and their course and speed broadcast. Offenders are reported to their Flag States for action to be taken in accordance with IMO Resolution A432(XI).

[MRCC Dover correspondence. \(RSDRA202300099495\). 19/23](#)

PAGE 200, SHIP REPORTING SYSTEMS, UNITED KINGDOM AND FRANCE - DOVER STRAIT (CALDOVREP), diagram DOVER STRAIT/PAS-DE-CALAIS, REPORTING SYSTEM - CALDOVREP.

Delete legend 'DOVER COASTGUARD' in approximate position 15°10'N 1°15'E and replace by 'CHANNEL VTS'.

[MRCC Dover correspondence. \(RSDRA202300099495\). 19/23](#)

VOLUME 6, NP286(3), Third Edition, 2022

Published Wk 27/22

*(Last Updates: Weekly Edition No. 18 dated 04 May 2023)***PAGE 94, FRANCE (Mediterranean Coast), PORTO-VECCHIO, Corse, Pilots, PROCEDURE, section (1).**

Delete and replace by:

(1) **Pilotage is compulsory** for vessels of 60m LOA and over and is available H24.*(Former update 35/22)*French Notice 9/2.4.3/23. (RSDRA2023000061392). 19/23**VOLUME 6, NP286(7), Fourth Edition, 2023**

Published Wk 06/23

*(Last Updates: Weekly Edition No. 13 dated 30 March 2023)***PAGE 73, BRAZIL, SALVADOR, Pilots, PROCEDURE, section (1).**

Delete and replace by:

(1) **Pilotage is compulsory** from the point of embarkation within the areas of the terminals of ARATU, São Roque, Marine Bulk Terminal (MBT), DOW Química and TEMADRE for the following vessels:

- (a) All foreign vessels regardless of gt, unless exempt
- (b) Brazilian vessels less than 2000 gt

Brazilian Bulletin 06/23. (RSDRA2023000095332). 19/23**PAGE 74, BRAZIL, SALVADOR, Port, CONTACT DETAILS, below Port Authority section.**

Insert:

Marine Bulk Terminal (MBT)

Telephone: +55(0)71 38799700

Brazilian Bulletin 06/23. (RSDRA2023000095332). 19/23**PAGE 174, FALKLAND ISLANDS (UK), STANLEY (Falkland Islands), Pilots, PROCEDURE, section (3).**

Delete and replace by:

(3) **Pilot boards** in position 51°40'00S 57°48'80W.Falkland Islands Maritime Authority correspondence. (RSDRA2023000095267). 19/23**PAGE 247, PERU, SUPE, PUERTO, Pilots, PROCEDURE, section (2).**

Delete and replace by:

(2) **Pilot boards** as follows:

- (a) In position 10°47'81S 77°45'66W.
- (b) It is reported that Pilots also board in the anchorage area approximately 1.5 n miles from the breakwater lighthouses.

Peruvian Notice 19/23. (RSDRA2023000095338). 19/23

VII

UPDATES TO MISCELLANEOUS ADMIRALTY NAUTICAL PUBLICATIONS

There are no updates to miscellaneous Nautical Publications this week

UKRAINE NAVIGATIONAL INFORMATION

Owing to insufficient information, it is not always possible to ensure that ADMIRALTY Nautical Publications are completely up-to-date for new dangers or changes to aids to navigation.

Mariners are therefore advised to exercise particular caution when navigating in Ukrainian waters.

ADMIRALTY DIGITAL SERVICES

1. ENC / ECDIS and AVCS

a) *ENCs temporarily withdrawn from AVCS*

A list of ENCs that have been temporarily withdrawn from AVCS for safety reasons can be found in the README file and on the AVCS Updates page, accessed from admiralty.co.uk/avcs.

b) *ENC Readme.txt file*

The README.TXT file located within the ENC_ROOT folder of AVCS Exchange sets contains important safety related information relating to the use of ENCs in ECDIS. The file is also available on the AVCS Support page, accessed from admiralty.co.uk/avcs.

This file should be consulted each week to ensure that all related issues are taken into consideration. The file header indicates the last time that the README file was updated and the date that it was issued.

c) *Temporary information in ENCs*

Mariners should take temporary information into account when planning and executing a passage with ENCs and most ENC producers now include temporary information in their ENCs. It is usually compiled as normal ENC updates, sometimes with the start and end dates attributed or described as 'Temporary' in the pick report.

The latest confirmed status of T&P NM information in the ENCs that are available in ADMIRALTY services is shown in the ENC-T&P-NM-Status.pdf file at: admiralty.co.uk/ENC-TP-NMs. Note that T&P NMs are compiled for paper charts and may not align with any temporary information that is compiled into ENCs.

ADMIRALTY Information Overlay (AIO) includes ADMIRALTY T&P NMs for paper charts where the ENC Producer has not confirmed that they include temporary information in their ENCs.

Further guidance can be found in the AIO User Guide on the AVCS Support page, accessed from admiralty.co.uk/avcs.

d) **Important notice for users of AVCS and ARCS Online Updating Services (AVCS OUS and ARCS OUS)**

The email service for AVCS OUS was withdrawn at the end of February 2019 due to technology infrastructure changes at UKHO.

The ARCS Online Updating Service was withdrawn in July 2019.

2. ADMIRALTY Products Supporting Digital Navigation

- i. ADMIRALTY ENC and ECDIS Maintenance Record (NP133C). This publication is designed to hold paper records on ENC and ECDIS maintenance to assist information management and support inspections. Please note that V2.0 is the current edition.
- ii. ADMIRALTY Guide to ENC Symbols Used in ECDIS (NP5012). A companion to the ADMIRALTY Guide to Symbols and Abbreviations Used on Paper Charts, NP5011. The 2nd edition of NP5012 includes the changes highlighted in the new S-52 standards and the new presentation library 4.0.
- iii. ADMIRALTY Guide to the Practical Use of ENCs (NP231). Supports ECDIS training on the interpretation and use of ENC data.
- iv. ADMIRALTY Guide to ECDIS Implementation, Policy and Procedures (NP232). Provides clear guidance for any individual or organisation responsible for the introduction of ECDIS, in particular those involved in the development of detailed ECDIS operating procedures.

3. ADMIRALTY Digital Publications (ADP)

ADMIRALTY Sailing Directions: Removal of AIS and Racons

In 2018, the UKHO began the process of removing AIS and Racon information from ADMIRALTY Sailing Directions, as this is held in greater detail within ADMIRALTY Radio Signals publications. During this transition, AIS and Racon information will be removed from new editions of each Sailing Direction volume, and AIS and Racon information present in existing Sailing Direction volumes will no longer be updated. For accurate, up-to-date information on AIS and Racons, refer to ADMIRALTY Radio Signals publications.

ADP V23 is available on the ADP Weekly Update DVD.

ADP V23 will be released on 15th December 2022. ADP V18 (until July 2023), V19 and V23 are supported by the UKHO and are the only versions that allow users to receive tidal updates as they are made available. Users of older versions of ADP should upgrade to a supported version at their earliest convenience.

ADMIRALTY TotalTide (ATT): German Tidal Stations predicted on LAT

The TotalTide application computes predictions for all German tidal stations based on Lowest Astronomical Tide (LAT). Mariners using charts which refer to Mean Low Water Springs (MLWS) in German waters, must deduct 0.5m from all predicted tidal heights for these ports before applying them to the depths on those charts to determine the correct predicted depth of water. This advice will also be contained in the 'Notes' tab on the Prediction Windows in TotalTide for each German tidal station.

For information: Please note the UKHO will not be supporting V18 from July 2023.

The ADP software and the Data updates can still be downloaded from weekly ADP Update and Software DVDs.

To get access to the ADP Update and Software DVD, please contact your ADMIRALTY Distributor.

For information: Ensure that Activation Key Requests and Update Data Requests for ADP are sent to ADPMailGateway@ukho.gov.uk

4. ADMIRALTY e-Nautical Publications (AENP)

There is currently an e-Reader 1.3 enabling users to read Digital copies of our Sailing Directions paper publications.

A new e-Reader 1.4 was released to the Channel on 01/10/2020. This version 1.4 has got the same functionalities as the current version 1.3 but is more performant and user-friendly. While the current 1.3 version can be used on Windows 7 and 8.1 Operating Systems (OS), the e-Reader 1.4 can only be used on Windows 8.1 and 10 OS, to follow the Microsoft guidelines of withdrawing support for Windows 7 OS.

To enable users to activate this new application, users might need to delete one e-Reader application from their Fleet Manager Licences if the maximum 3 allowed has been reached.

Both the e-Readers 1.3 and 1.4 are supported at the UKHO.

The e-Reader 1.4 software and the Data updates can be downloaded from weekly ADP Update and Software DVDs.

To get access to the AENP Update and Software DVD, please contact your ADMIRALTY Distributor.

5. Status of ADMIRALTY Digital Services

Update status table			
	Product	Last issue date/Week	Reissue Date/Week
i.	ADMIRALTY Vector Chart Service (AVCS) Base .zip download	01 December 2022 - 48	
ii.	ADMIRALTY Information Overlay (AIO) Base CD	31 March 2022 - 13	
iii.	ADMIRALTY Raster Chart Service (ARCS) Regional disc 1	11 May 2023 - 19	
	ADMIRALTY Raster Chart Service (ARCS) Regional disc 2	16 February 2023 - 07	
	ADMIRALTY Raster Chart Service (ARCS) Regional disc 3	15 December 2022 - 50	25 May 2023 - 21
	ADMIRALTY Raster Chart Service (ARCS) Regional disc 4	24 November 2022 - 47	06 July 2023 - 27
	ADMIRALTY Raster Chart Service (ARCS) Regional disc 5	06 April 2023 - 14	
	ADMIRALTY Raster Chart Service (ARCS) Regional disc 6	19 January 2023 - 03	
	ADMIRALTY Raster Chart Service (ARCS) Regional disc 7	23 March 2023 - 12	
	ADMIRALTY Raster Chart Service (ARCS) Regional disc 8	02 March 2023 - 09	
	ADMIRALTY Raster Chart Service (ARCS) Regional disc 9	28 July 2022 - 30	22 June 2023 - 25
	ADMIRALTY Raster Chart Service (ARCS) Regional disc 10	02 February 2023 - 05	
	ADMIRALTY Raster Chart Service (ARCS) Regional disc 11	06 October 2022 - 40 Small-scale Planning Charts	

ADMIRALTY Vector Chart Service (AVCS) DVDs and ADMIRALTY Information Overlay (AIO) CDs are issued weekly and contain all base and update data available at the time of issue.

6. Supported ADMIRALTY Software Versions

Product	Supported Versions
ADP	V18, V19, V23
ADMIRALTY e-Reader	1.3, 1.4
NavPac and Compact Data	4.2

If you are using an unsupported version, contact your Chart Distributor to upgrade to the latest version as soon as possible.

HYDROGRAPHIC NOTE FOR PORT INFORMATION

(To accompany Form H.102)

H.102A

(V7.0 Jan 2013)

Reporting Port Information affecting ADMIRALTY Products

NAME OF PORT			
APPROXIMATE POSITION	Latitude		Longitude
GENERAL REMARKS Principal activities and trade. Latest population figures and date. Number of ships or tonnage handled per year. Maximum size of vessel handled. Copy of Port Handbook (<i>if available</i>).			
ANCHORAGES Designation, depths, holding ground, shelter afforded.			
PILOTAGE Authority for requests. Embark position. Regulations.			
DIRECTIONS Entry and berthing information. Tidal streams. Navigational aids.			
TUGS Number available.			
WHARVES Names, numbers or positions & lengths. Depths alongside.			
CARGO HANDLING Containers, lighters, Ro-Ro etc.			
REPAIRS Hull, machinery and underwater. Shipyards. Docking or slipping facilities. (<i>Give size of vessels handled or dimensions</i>) Divers.			

HYDROGRAPHIC NOTE FOR PORT INFORMATION

(To accompany Form H.102)

H.102A

(V7.0 Jan 2013)

RESCUE AND DISTRESS Salvage, Lifeboat, Coastguard, etc.	
SUPPLIES Fuel. (with type, quantities and methods of delivery) Fresh water. (with method of delivery and rate of supply) Provisions.	
SERVICES Medical. Ship Sanitation. Garbage and slops. Ship chandlery, tank cleaning, compass adjustment, hull painting.	
COMMUNICATIONS Nearest airport or airfield. Port radio and information service. (with frequencies and hours of operating)	
PORT AUTHORITY Designation, address, telephone, e-mail address and website.	
VIEWS Photographs (where permitted) of the approaches, leading marks, the entrance to the harbour etc.	
ADDITIONAL DETAILS	

NOTES:

1. Form H.102A lists the information required for ADMIRALTY Sailing Directions and has been designed to help the sender and the recipient. The sections should be used as an aide-memoir, being used or followed closely, whenever appropriate. Where there is insufficient space on the form an additional sheet should be used.
2. **Reports which cannot be confirmed or are lacking in certain details should not be withheld.** Shortcomings should be stressed and any firm expectation of being able to check the information on a succeeding voyage should be mentioned.

HYDROGRAPHIC NOTE FOR GNSS OBSERVATIONS AGAINST CORRESPONDING BRITISH ADMIRALTY CHART POSITIONS

(To accompany Form H.102)

H.102B
(V7.0 Jan 2014)

NOTES:

1. This form is designed to assist in the reporting of observed differences between WGS84 datum and the geodetic datum of British ADMIRALTY Charts by mariners, including yachtsmen and should be submitted as an accompaniment to Form H.102 (full instructions for the rendering of data are on Form H.102). Where there is insufficient space on the form an additional sheet should be used.

2. Objective of GNSS Data Collection

The UK Hydrographic Office would appreciate the reporting of Global Navigation Satellite Systems (GNSS) positions, referenced to WGS84 datum, at identifiable locations or features on British ADMIRALTY Charts. Such observations could be used to calculate positional shifts between WGS84 datum and the geodetic datum for those British ADMIRALTY Charts which it has not yet been possible to compute the appropriate shifts. These would be incorporated in future new editions or new charts and promulgated by Preliminary Notices to Mariners in the interim.

It is unrealistic to expect that a series of reported WGS84 positions relating to a given chart will enable it to be referenced to that datum with the accuracy required for geodetic purposes. Nevertheless, this provides adequate accuracy for general navigation, considering the practical limits to the precision of 0.2mm (probably the best possible under ideal conditions – vessel alongside, good light, sharp dividers etc), this represents 10 metres on the ground at a chart scale of 1:50,000.

It is clear that users prefer to have **some** indication of the magnitude and direction of the positional shift, together with an assessment of its likely accuracy, rather than be informed that a definitive answer cannot be formulated. Consequently, where a WGS84 version has not yet been produced, many charts now carry approximate shifts relating WGS84 datum to the geodetic datum of the chart. Further observations may enable these values to be refined with greater confidence.

3. Details required

- a. It is essential that the chart number, edition date and its correctional state (latest NM) are stated. For ENC's, please state the ENC name and latest update applied.
- b. Position (to 2 decimal places of a minute) of observation point, using chart graticule or, if ungraduated, relative position by bearing/distance from prominent charted features (navigation lights, trig. points, church spires etc.).
- c. Position (to 2 decimal places of a minute) of observation point, using GNSS Receiver. Confirm that GNSS positions are referenced to WGS84 datum.
- d. Include GNSS receiver model and aerial type (if known). Also of interest: values of PDOP, HDOP or GDOP displayed (indications of theoretical quality of position fixing depending upon the distribution of satellites overhead) and any other comments.

HYDROGRAPHIC NOTE – H.102 INSTRUCTIONS (V9.0 Dec 2017)

1. Mariners are requested to notify the United Kingdom Hydrographic Office (UKHO) when new or suspected dangers to navigation are discovered, changes observed in aids to navigation, or corrections to publications are seen to be necessary. Mariners can also report any ENC display issues experienced. The Mariner's Handbook (NP100) Chapter 4 gives general instructions. The provisions of international and national laws should be complied with when forwarding such reports.
2. Accurate position or knowledge of positional error is of great importance. Where latitude and longitude have been used to specifically position the details of a report, a full description of the method used to obtain the position should be given. Where possible the position should be fixed by GPS or Astronomical Observations. A full description of the method, equipment, time, estimated error and datum (where applicable) used should be given. Where the position has been recorded from a smart phone or tablet, this is to be specifically mentioned. When position is defined by sextant angles or bearings (true or magnetic to be specified), more than two should be used to provide a redundancy check. Where position is derived from Electronic Position Fixing (e.g. LORAN C) or distances observed by radar, the raw readings of the system in use should be quoted wherever possible. Where position is derived after the event, from other observations and / or Dead Reckoning, the methodology of deriving the position should be included.
3. **Paper Charts:** A cutting from the largest scale chart is often the best medium for forwarding details, the alterations and additions being shown thereon in red. When requested, a new copy will be sent in replacement of a chart that has been used to forward information, or when extensive observations have involved defacement of the observer's chart. If it is preferred to show the amendments on a tracing of the largest scale chart (rather than on the chart itself) these should be in red as above, but adequate details from the chart must be traced in black ink to enable the amendments to be fitted correctly.
4. **ENCs:** A screen shot of the largest scale usage band ENC with the alterations and additions being shown thereon in red. If it is to report an issue with the display of an ENC, a screen shot of the affected ENC should be sent along with details of the ECDIS make, model or age and version in use at the time.
5. When **soundings** are obtained The Mariner's Handbook (NP100) should where possible be consulted. It is important to ensure that full details of the method of collection are included with the report. This should include but not limited to:
 - (a) Make, model and type of echo sounder used.
 - (b) Whether the echo sounder is set to register depths below the surface or below the keel; in the latter case the vessel's draught should be given.
 - (c) Time, date and time zone should be given in order that corrections for the height of the tide may be made where necessary, or a statement made as to what corrections for tide have already been made.
 - (d) Where larger amounts of bathymetric data have been gathered, only those areas where a significant difference to the current chart or ENC should be specifically mentioned on the H102. The full data set may also be sent in, with an additional note added to this effect. If no significant differences are noted, the bathymetric data may still be of use, and sent in accordingly. Where full data sets are included, a note as to the data owner and their willingness for the data to be incorporated into charts and ENCs included.
6. **For Echo Sounders that use electronic 'range gating', care should be taken that the correct range scale and appropriate gate width are in use.** Older electro-mechanical echo sounders frequently record signals from echoes received back after one or more rotations of the stylus have been completed. Thus, with a set whose maximum range is 500m, an echo recorded at 50m may be from depths of 50m, 550m or even 1050m. Soundings recorded beyond the set's nominal range can usually be recognised by the following:
 - (a) the trace being weaker than normal for the depth recorded;
 - (b) the trace passing through the transmission line;
 - (c) the feathery nature of the trace.

As a check that apparently shoal soundings are not due to echoes received beyond the set's nominal range, soundings should be continued until reasonable agreement with charted soundings is reached. However, soundings received after one or more rotations of the stylus can still be useful and should be submitted if they show significant differences from charted depths.
7. **Reports which cannot be confirmed or are lacking in certain details should not be withheld.** Shortcomings should be stressed and any firm expectation of being able to check the information on a succeeding voyage should be mentioned.
8. Reports of **shoal soundings**, uncharted dangers and aids to navigation out of order should, at the mariner's discretion, also be made by radio to the nearest coast radio station. The draught of modern tankers is such that any uncharted depth under 30 metres or 15 fathoms may be of sufficient importance to justify a radio message.
9. Changes to Port Information should be forwarded on Form H.102A and any GPS/Chart Datum observations should be forwarded on Form H.102B together with Form H.102. Where there is insufficient space on the forms additional sheets should be used.
10. Reports on ocean currents, magnetic variations and other marine observations should be made in accordance with The Mariner's Handbook (NP100) Chapter 4 with forms also available at admiralty.co.uk/MSI.

Note. - An *acknowledgement* or receipt will be sent and the information then used to the best advantage which may mean immediate action or inclusion in a revision in due course; for these purposes, the UKHO may make reproductions of any material supplied. When a Notice to Mariners is issued, the sender's ship or name is quoted as authority unless (as sometimes happens) the information is also received from other authorities or the sender states that they do not want to be named by using the appropriate tick box on the form. An explanation of the use made of contributions from all parts of the world would be too great a task and a further communication should only be expected when the information is of outstanding value or has unusual features.



Hydrographic Note – H.102
Reporting information affecting ADMIRALTY Maritime Products & Services

For emergency information affecting safety of life at sea forward to: navwarnings@ukho.gov.uk
Or alternatively contact T: +44 (0)1823 353448 (direct line) +44 (0)7989 398345 (mobile) F: +44 (0)1823 322352
For new information affecting all ADMIRALTY Charts and Publications forward to: sdrr@ukho.gov.uk
This form H.102 and instructions are available online: admiralty.co.uk/msi

Date		Ref. number	
Name of ship or sender		IMO number	
Address and general locality			
E-mail / Tel / Fax of sender			
Subject			
Position (see <i>Instruction 2</i>)	Latitude		Longitude
	GPS	Datum	Accuracy
ADMIRALTY Charts affected		Edition	
Latest Weekly Edition of Notices to Mariners (NMs) held			
Replacement copy of chart number (see <i>Instruction 3</i>)	IS / IS NOT required		
ENCs affected			
Latest update disk applied	Week:		
Make, model and or age of ECDIS if applicable			
Publications affected (e-NP / DP number, edition number)			
Date of latest supplement/update, page & Light List number etc.			
Details of anomaly / observation:			
Name of observer / reporter			
H.102A submitted	Yes <input type="checkbox"/>	No <input type="checkbox"/>	H.102B submitted Yes <input type="checkbox"/> No <input type="checkbox"/>
Tick box if not willing to be named as source of this information <input type="checkbox"/>			

Alternatively use our H-Note App located here:

admiralty.co.uk/H-note

